

# **Dulce Underground**

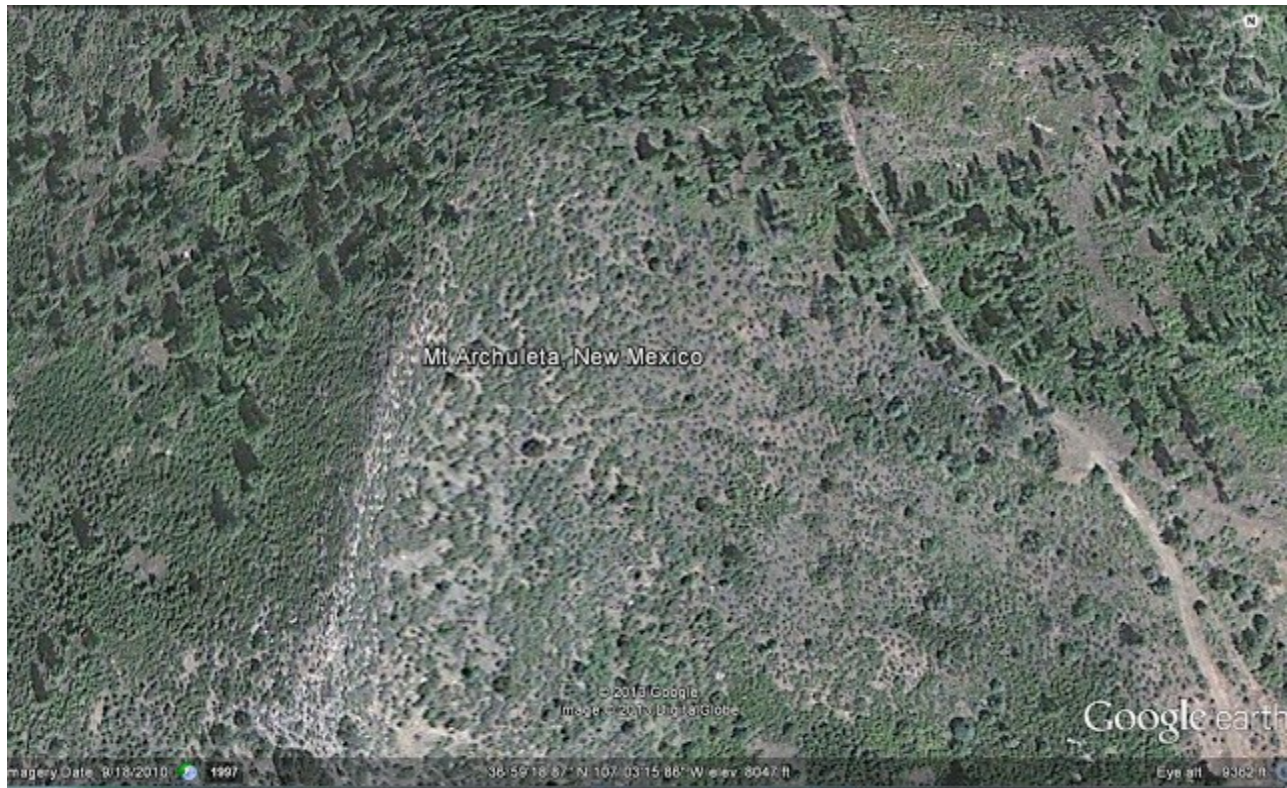
# **Base: Smuggled**

# **Footage**

Saturday, March 16, 2013 20:24

(Before It's News)

The Dulce underground secret base is purportedly under Mt. Archuleta near Dulce, New Mexico. This is supposedly the largest Reptilian and Grey base in America where there are allegedly atomic manipulation, cloning, studies of the human aura, advanced mind control applications, animal/human crossbreeding, visual and audio human chip implantation, abduction and feeding off of humans



This footage has allegedly been smuggled out from the Dulce alien underground base where humans and aliens work together on horrific bio genetic experiments this mind blowing new footage leaves many questions unanswered you can see a vast hall of cryo genetic feeding tanks and vats.



Each of these tell a confusing, disturbing story of human / alien interaction in the top secret Human alien hybrid breeding programs

The Dulce base is part of a the multi-leveled conspiracy involving underground bases, black helicopters, New World Order plans, illegal industrial-military treaties with ETS, aerospace anti-gravity secrets preserved by deadly force, kidnapping and genetic engineering, experiments which take place "in the black" (in that the alien-corporate monopolies operate under industrial security clearance levels so deep that even congressional regulators cannot access and oversee them

The DULCE Book : By BRANTON @<http://www.title14.com/ufo/dulce/>

The Secret Government cloned humans by a process perfected in the world's largest and most advanced biogenetic research facility, Los Alamos. The elite humans now have their own disposable slave-race.

Like the alien Greys, the US Government secretly impregnated females, then removed the hybrid fetus after a three month time period, before accelerating their growth in laboratories. Biogenetic (DNA Manipulation) programming is then instilled - they are implanted and controlled at a distance through RF (Radio Frequency) transmissions.

Many Humans are also being implanted with brain transceivers. These act as telepathic communication "channels" and telemetric brain manipulation devices. This network was developed

and initiated by DARPA. Two of the procedures were RHIC (Radio-Hypnotic Intercerebral Control) and EDOM (Electronic Dissolution of Memory).

They also developed ELF and EM wave propagation equipment, which affect the nerves and can cause nausea, fatigue, irritability, even death. This research into biodynamic relationships within organisms has produced a technology that can change the genetic structure and heal.

#### Overt and Covert Research

U.S. Energy Secretary John Herrington named the Lawrence Berkeley Laboratory and New Mexico's Los Alamos National Laboratory to house new advanced genetic research centers as part of a project to decipher the human genome. The genome holds the genetically coded instructions that guide the transformation of a single cell, a fertilized egg, into a biological organism.

Your government made it illegal for you to put humans in cages, but they made deals with aliens to put humans in cages and to kill them and eat them. Now what do you think of your government?

Dulce, New Mexico is a small town, but it's a bee hive of activity for aliens. This article by Sherry Shriner will tell you more about it. These aliens eat humans and they keep them in cages, until they are ready to kill them. They love children! If you want someone to sit down and tell you all about the Dulce underground base, for the next 30 minutes, this video will do that for you. You'll get an earful. It took Sherry years to accumulate this information and I've read a lot about Dulce and what she writes is in accordance with what I've read. This report is the best I can do to working up to doing the Thomas Castello Story.

In this, his second Veritas interview, software engineer, author and researcher Anthony F. Sanchez delves into the stuff of his lauded new book, UFO Highway. He talks about secret underground bases, the Maglev rail lines that connect them, ET technology, anatomical mutilation, the Illuminati, HAARP, and more -- all corroborated, he says, by his interviews with a mysterious "Colonel X" who worked at Dulce.

Weighing in with almost 400 pages of data, UFO Highway material percolates throughout this discussion in tantalizing bits and starts. During the second hour facts start flying fast and furiously. Among some of the bombs Sanchez drops on us:

An 1870s Apache warrior/small being confrontation left bones and guns lying inside a New Mexico cave, evidence of a violent battle left untouched until 1938. Within those caves tablets were found documenting the entire history of the Grays "since their creation on Earth." The Grays are expecting their progenitors to return in 2012.

There are many groups and types of Grays. One group was created by the progenitors to manage the human population who were mining gold and doing agriculture, serving the Anunnaki. Then there are the Austra Albus, placed at Dulce and infected with some disease, although they survived.

Dissident Grays fought lower level Grays alongside U.S. military personnel at Dulce at one point. The dissidents are 600 years old mostly, and have a different doctrine than the lower level Grays. The lower level Grays are thousands of years old.

The Austra Albus can breed with humans. They are, in fact, 99.99% human. The Honorable Lady Barbara Judge, chairman of Hyperion, is one of them. Hyperion is working out of Dulce and Judge is in charge of the program that intends to sell miniature nuclear reactors as individual-use power devices across the planet. "Pine Gap uses them, Mount Weather, all these underground facilities use them."

The 4-corners area of New Mexico has the highest levels of missing people in the country; women of child-bearing age, and young men from 10 to 15, the prime age for super soldier programs. These military abductions are an outgrowth of things the Grays have been teaching us since the 1940s. "The Dulce facility -- it's horrific what they are doing to these people."

China has been selected by the new world order to invade the rest of the world after a false flag, mass landing event causes pandemonium. China has built "the mother of underground bases," and is developing stealth technology at an alarming rate. "It's alien technology." A massive human depopulation program is going to be implemented thereafter. What China doesn't know is that "the Chinese are being manipulated by human-alien hybrids who have controlled this planet since the very beginning." The human depopulation program is to begin with them.

Project Leonid is a low Earth orbit defense system successfully launched by the U.S. Using satellites of various sizes, it will combat a space war with the Chinese and ETs. It uses artificial intelligence, however, and has a 30% chance of following its own plans.

Follow these links for related research.

The Dulce Base @ <http://www.sacred-texts.com/ufo/dulce...>

The Dulce Outside over head views of base and powerplant @ <http://forteanwest.com/wordpress-mu/...>

Dulce Base: What Are We Seeing @<http://naturalplane.blogspot.com/2011...>

The Dulce Book @ <http://www.title14.com/ufo/dulce/>

Check out my Face Book page people thank you for the support @  
<https://www.facebook.com/ReptilianRev...>

<http://beforeitsnews.com/blogging-citizen-journalism/2013/03/dulce-underground-alien-base-smuggled-footage-2446294.html>

## **Dulce NM Reptilian Base Footage Of Cryo Tanks (HD)**

<http://www.youtube.com/watch?v=IDoQDixfhxk>

**Published on Mar 7, 2013**

Dulce underground secret Base under Mt. Archuleta, Dulce, New Mexico

This is the Largest Reptilian and Grey Base in America

Check out my Face Book page people thank you for the support @

<https://www.facebook.com/ReptilianRev...>

This footage has allegedly been smuggled out from the Dulce alien underground base where humans and aliens work together on horrific bio genetic experiments this mind blowing new footage leaves many questions unanswered you can see a vast hall of cryo genetic feeding tanks and vats Each of these tell a confusing, disturbing story of human / alien interaction in the top secret

Human alien hybrid breeding programs This is the Largest Reptilian and Grey Base in America.here Atomic Manipulation, cloning, studies of the human aura, advanced mind control applications, animal/human crossbreeding, visual and audio human chip implantation, abduction and feeding off of humans

The DULCE Book : By BRANTON @ <http://www.title14.com/ufo/dulce/>

The DULCE Book ... CHAPTER 1 : THE OCTOPUS, BLACK PROJECTS AND  
THE DULCE ... CHAPTER 4 : DULCE NEW MEXICO & THE NAZI CONNECTION ...

The Secret Government cloned humans by a process perfected in the world's largest and most advanced biogenetic research facility, Los Alamos. The elite humans now have their own disposable slave-race.

Like the alien Greys, the US Government secretly impregnated females, then removed the hybrid fetus after a three month time period, before accelerating their growth in laboratories. Biogenetic (DNA Manipulation) programming is then instilled - they are implanted and controlled at a distance through RF (Radio Frequency) transmissions.



Many Humans are also being implanted with brain transceivers. These act as telepathic communication "channels" and telemetric brain manipulation devices. This network was developed and initiated by DARPA. Two of the procedures were RHIC (Radio-Hypnotic Intercerebral Control) and EDOM (Electronic Dissolution of Memory).

They also developed ELF and EM wave propagation equipment, which affect the nerves and can cause nausea, fatigue, irritability, even death. This research into biodynamic relationships within organisms has produced a technology that can change the genetic structure and heal.

#### Overt and Covert Research

U.S. Energy Secretary John Herrington named the Lawrence Berkeley Laboratory and New Mexico's Los Alamos National Laboratory to house new advanced genetic research centers as part of a project to decipher the human genome. The genome holds the genetically coded instructions that guide the transformation of a single cell, a fertilized egg, into a biological organism.

**FOLLOW THESE LINKS AND DO YOUR RESEARCH !!!!**

The Dulce Base @ <http://www.sacred-texts.com/ufo/dulce...>

The Dulce Outside over head views of base and powerplant @ <http://forteanwest.com/wordpress-mu/...>

Dulce Base: What Are We Seeing @ <http://naturalplane.blogspot.com/2011...>

The Dulce Book @ <http://www.title14.com/ufo/dulce/>

the multi-leveled conspiracy involving underground bases, black helicopters, New World Order plans, illegal industrial-military treaties with ETS, aerospace anti-gravity secrets preserved by deadly force, kidnapping and genetic engineering, experiments which take place "in the black" (in that the alien-corporate monopolies operate under industrial security clearance levels so deep that even congressional regulators cannot access and oversee them)

## **Prisoners of the Dulce Base-BackToConstitution**

<http://www.youtube.com/watch?v=qFkC0xTLJIM>

**Published on Mar 9, 2013**

<https://www.youtube.com/watch?v=liqh8...>

Published on May 16, 2012

BackToConstitution

Your government made it illegal for you to put humans in cages, but they made deals with aliens

to put humans in cages and to kill them and eat them. Now what do you think of your government?

Dulce, New Mexico is a small town, but it's a bee hive of activity for aliens. This article by Sherry Shriner will tell you more about it. These aliens eat humans and they keep them in cages, until they are ready to kill them. They love children! If you want someone to sit down and tell you all about the Dulce underground base, for the next 30 minutes, this video will do that for you. You'll get an earful. It took Sherry years to accumulate this information and I've read a lot about Dulce and what she writes is in accordance with what I've read. This report is the best I can do to working up to doing the Thomas Castello Story.

When I get up the nerve, I'm going to tell you the Thomas Castello story. He was an eye witness who saw thousands of humans in cages. Andy Pero saw them too and I have already done the Project Superman series. Look for the playlist on this channel.

.....  
Anthony Sanchez on Veritas Radio - 2/5 - Dulce, Human Origins, Blue Beam & Project Leonid  
<https://www.youtube.com/watch?v=B-JXf...> Part 2  
<https://www.youtube.com/watch?v=yESVe...> Part 3  
<https://www.youtube.com/watch?v=k57pm...> Part 4  
[https://www.youtube.com/watch?v=\\_R6Wd...](https://www.youtube.com/watch?v=_R6Wd...) Part 5

Uploaded on Dec 13, 2011

To listen to the full interview, subscribe at <http://www.VeritasRadio.com>

## S y n o p s i s

In this, his second Veritas interview, software engineer, author and researcher Anthony F. Sanchez delves into the stuff of his lauded new book, UFO Highway. He talks about secret underground bases, the Maglev rail lines that connect them, ET technology, anatomical mutilation, the Illuminati, HAARP, and more -- all corroborated, he says, by his interviews with a mysterious "Colonel X" who worked at Dulce.

Weighing in with almost 400 pages of data, UFO Highway material percolates throughout this discussion in tantalizing bits and starts. During the second hour facts start flying fast and furiously. Among some of the bombs Sanchez drops on us:

An 1870s Apache warrior/small being confrontation left bones and guns lying inside a New Mexico cave, evidence of a violent battle left untouched until 1938. Within those caves tablets were found documenting the entire history of the Grays "since their creation on Earth." The Grays are expecting their progenitors to return in 2012.

There are many groups and types of Grays. One group was created by the progenitors to manage the human population who were mining gold and doing agriculture, serving the Anunnaki. Then there are the Austra Albus, placed at Dulce and infected with some disease, although they survived.

Dissident Grays fought lower level Grays alongside U.S. military personnel at Dulce at one point. The dissidents are 600 years old mostly, and have a different doctrine than the lower level Grays. The lower level Grays are thousands of years old.

The Austra Albus can breed with humans. They are, in fact, 99.99% human. The Honorable Lady Barbara Judge, chairman of Hyperion, is one of them. Hyperion is working out of Dulce and Judge is in charge of the program that intends to sell miniature nuclear reactors as individual-use power devices across the planet. "Pine Gap uses them, Mount Weather, all these underground facilities use them."

The 4-corners area of New Mexico has the highest levels of missing people in the country; women of child-bearing age, and young men from 10 to 15, the prime age for super soldier programs. These military abductions are an outgrowth of things the Grays have been teaching us since the 1940s. "The Dulce facility -- it's horrific what they are doing to these people."

China has been selected by the new world order to invade the rest of the world after a false flag, mass landing event causes pandemonium. China has built "the mother of underground bases," and is developing stealth technology at an alarming rate. "It's alien technology." A massive human depopulation program is going to be implemented thereafter. What China doesn't know is that "the Chinese are being manipulated by human-alien hybrids who have controlled this planet since the very beginning." The human depopulation program is to begin with them.

Project Leonid is a low Earth orbit defense system successfully launched by the U.S. Using satellites of various sizes, it will combat a space war with the Chinese and ETs. It uses artificial intelligence, however, and has a 30% chance of following its own plans.

## The Dulce Base

---

```
*****
ÄÄÄÄÄÄÄÄÄÄÄÄ * * ÄÄÄÄÄÄÄÄÄÄÄÄ
* L I T E R A R Y   F R E E W A R E *
*                               *
* F O U N D A T I O N *
ÄÄÄÄÄÄÄÄÄÄÄÄ * * ÄÄÄÄÄÄÄÄÄÄÄÄ
*****
```

-=ð P R O U D L Y í P R E S E N T S ð=-

THE FOLLOWING MATERIAL COMES FROM PEOPLE WHO KNOW THE DULCE



(UNDERGROUND) BASE EXISTS. THEY ARE PEOPLE WHO WORKED IN THE LABS; ABDUCTEES TAKEN TO THE BASE; PEOPLE WHO ASSISTED IN THE CONSTRUCTION; INTELLIGENCE PERSONAL (NSA,CIA,FBI ECT.) AND UFO / INNER-EARTH RESEARCHERS.

THIS INFORMATION IS MEANT FOR THOSE WHO ARE SERIOUSLY INTERESTED IN THE DULCE BASE. FOR YOUR OWN PROTECTION BE ADVISED TO "USE CAUTION" WHILE INVESTIGATING THIS COMPLEX.

An ongoing investigation:

"THE DULCE BASE"

by Jason Bishop III

This facility is a "GENETICS LAB" and is connected to Los Alamos, via a "Tube-Shuttle." Part of their research is related to the General Effects of Radiation (Mutations and Human Genetics). Its research also includes other "Intelligent Species" (Alien Biological Life Form "Entities").

In the revised September 1950 edition of "THE EFFECTS OF ATOMIC WEAPONS" prepared for and in cooperation with the U.S. Department of Defense and the U.S. Atomic Energy Commission, under the direction of the Los Alamos Scientific Laboratory, we read about how "complete Underground placement of Bases is desirable". On page #381: "There are apparently no fundamental difficulties in construction and operating Underground various types of important Facilities. Such facilities may be placed in a suitable existing mine or a site may be excavated for the purpose".

#### CAUGHT IN THE GAME

Centuries ago, Surface People (some say the Illuminati) entered into a pact with an "Alien Nation" (hidden within the Earth). The U.S. Government, in 1933, agreed to trade Animals and Humans in exchange for High Tech Knowledge, and allow them to use (undisturbed) UNDERGROUND BASES, in the Western USA. A Special Group was formed to deal with the Alien Beings. In the 1940's, "Alien Life Forms (ALF)" began shifting their focus of operations, from Central and South America, to the USA.

The Continental Divide is vital to these "Entities". Part of this has to do with Magnetism (Substrata Rock) and High Energy States (Plasma). [See: BEYOND THE FOUR DIMENSIONS (Reconciling Physics, Parapsychology and UFOs by Karl Brunstein. Also: NUCLEAR EVOLUTION (Discovery of the Rainbow Body) by Christopher Hills.]

This area has a very high concentration of Lightning Activity, Underground Waterways and Cavern Systems, Fields of Atmospheric Ions, ect, ect.

### WHOS PLANET IS THIS?

These Aliens consider themselves "Native Terrans".

They are an Ancient Race (descendent from a Reptilian Humanoid Species which cross-bred with Sapient Humans). They are untrustworthy manipulative Mercenary Agents for another Extraterrestrial Culture (The DRACO) who are returning to Earth (their ancient "Outpost") to use it as a staging area.

But, these Alien Cultures are in conflict over Whos' Agenda will be followed for this Planet. All the while Mental Control is being used to keep Humans "in place", especially since the Forties.

The DULCE Complex is a Joint US Government / Alien Base. It was the first built with The Aliens (others are in Colorado, NV, AZ.

### THE SECRET "ACTIVITY"

Paul Benewitz reports, about his study into the Dulce area, "Troops went in and out of there every summer, starting in '47. The natives do recall that. They also built a road - right in front of the people of Dulce and trucks went in and out for a long period. That Road was later blocked and destroyed.. The signs on the trucks were 'Smith' Corp. out of Paragosa Springs, Colorado. No such corporation exists now - no record exists..... I believe the Base - at least the first one was being built then under the cover of a lumbering project.... problem - they NEVER hauled logs. Only BIG Equipment".

### R&D AND THE MILITARY INDUSTRIAL COMPLEX

THE RAND CORP. became involved and did a study, for the Base. Most of the lakes near Dulce were made, via Government grants 'for' the Indians.

NAVAJO DAM is the main source for conventional electrical power, with a second source in EL VADO (also, an entrance).

Note: If RAND is the mother of "THINK TANKS", then the "FORD FOUNDATION" must be considered the father.

Rand secrecy is not confined to 'Reports', but on occasion extends to Conferences and Meetings. On page #645 of The PROJECT RAND, proceedings of the DEEP UNDERGROUND CONSTRUCTION SYMPOSIUM (March 1959) we read: "Just as airplanes, ships and automobiles have given man mastery of the surface of the Earth, Tunnel-Boring Machines... will give him access to the Subterranean World".

Note: The Sept. 1983 issue of "OMNI" (pg#80) has a color drawing of "THE SUBTERRENE", the Los Alamos nuclear-powered

tunnel machine that burrows through the rock, deep underground, by heating whatever stone it encounters into molten rock (magma), which cools after the SUBTERRENE has moved on. These underground tubes are used by electro-magnetically powered "Subshuttle Vehicles", which can travel at great speeds. They connect the "Hidden Empire" Sub-City Complexes. Also, the top-secret project code-named: "NOAH's ARK", uses "TUBE-SHUTTLES" in connection with a system of over 100 'Bunkers' and 'Bolt Holes' which have been established at various places on Earth. With other Bases inside the Moon and Mars. Many of these underground Cities are complete with streets, sidewalks, lakes, small electric cars, apartments, offices and shopping malls.

There were over 650 attendees to the 1959 RAND Symposium. Most were representatives of the Corporate-Industrial State, like: THE GENERAL ELECTRIC COMPANY, AT&T, HUGHES AIRCRAFT, NORTHROP CORP., SANDIA CORP., STANFORD RESEARCH INSTITUTE, WALSH CONSTRUCTION COMPANY, THE BECHTEL CORP, COLORADO SCHOOL OF MINES, ECT,ECT.

BECHTEL (pronounced BECK-tul) is a supersecret international corporate octopus, founded in 1898. Some say the firm is really a "SHADOW GOVERNMENT" - a working arm of the CIA. It is the largest construction and engineering outfit, in the USA and the WORLD (and some say BEYOND).

The most important posts in the US Government are held by former BECHTEL Officers. They are part of "The WEB" (an interconnected control system) which links the Tri-Lateralist plans, the C.F.R. the Orders of "Illuminism" (Cult of the All-Seeing Eye) and other interlocking groups.

## SURVIVING THE FUTURE

The DULCE FACILITY consists of a Central "HUB", the Security Section, (also some photo labs). The deeper you go, the stronger the Security. This is a multi-leveled Complex. There are over 3000 cameras at various High-Security locations (exits and Labs).

There are over 100 Secret Exits near and around Dulce. Many around Archuleta Mesa, others to the south around Dulce Lake and even as far east as Lindrith.

Deep sections of the Complex connect into natural Cavern Systems.

A person who worked at the Base, who had an "ULTRA 7" Clearance, reports: "There may be more than seven levels, but I only know of seven. Most of the Aliens are on 5-6-7 Levels. Alien housing is Level Five."

## 21st CENTURY POWER: "BIO-TECH"

We are leaving the Era of expendable resources, like Oil based products. The Power of the Future is Re-newable resources... "Biologically" Engineered. The Dulce Genetic

Research was originally funded under the cloak of "BLACK BUDGET" Secrecy. (Billions \$\$\$\$)

They were interested in intelligent "Disposable Biology" (Humanoids), to do the dangerous Atomic (Plutonium) Rocket and Saucer experiments.

We Cloned "our" own little Humanoids. Via a process perfected in the Bio-Genetic Research Center of the World, Los Alamos! Now we have our own disposable slave-race. Like the Alien "Greys" (EBES), the US Government clandestinely impregnated females, then removed the hybrid fetus, (after three months) and then accelerated their growth in the Lab. Biogenetic (DNA Manipulation) programming is then instilled - they are "Implanted" and controlled at a distance through RF (Radio Frequency) transmissions. Many Humans are also being "Implanted" with Brain Transceivers. These act as telepathic "Channels" and telemetric brain manipulation devices. The network-net was set-up by DARPA (Advanced Research Project Agency). Two of the procedures were, RHIC (Radio-Hypnotic Intercerebral Control) and EDOM (Electronic Dissolution of Memory). The brain transceiver is inserted into the head thru the nose. These devices are used in the Soviet Union and the United States, as well as Sweden. The Swedish Prime Minister Palme gave the National Swedish Police Board the right (in 1973) to insert brain transmitters into the heads of human beings COVERTLY!

They also developed ELF and EM wave propagation equipment (RAYS) which affect the nerves and can cause nausea, fatigue, irritability, even death. This is essentially the same as Richard Shaver's Cavern "Telaug" Mech. This research into biodynamic relationships within organisms ("BIOLOGICAL PLASMA") has produced a RAY that can change the "genetic structure" and "HEAL". Shaver's Cavern "BEN-Mech" could HEAL!

#### WARNING: MANIPULATION AND CONTROL

FEAR, FRAUD AND FAVOR... The Pentagon, the CIA, NSA, DEA, FBI, NSC, ect. seek to capitalize on the Beliefs of the American Public. The Secret Government is getting ready to 'stage' a Contact-Landing with "ALIENS" in the near future. This way they can 'CONTROL' the release of Alien related Propaganda. We will be told of an Inter-Stellar Conflict.

But... what looks real, may be "FAKE". What is disinformation?

Is your attention being diverted by the Strategy of a "SHADOW PLAN"?

#### OVERT AND COVERT RESEARCH

As US Energy Secretary, John Herrington named the Lawrence Berkeley Laboratory and New Mexico's Los Alamos National Laboratory to house new

advanced genetic research centers as part of a Project to decipher the Human Genome. The Genome holds the genetically coded instructions that guide the transformation of a single cell - a fertilized egg - into a Biological Being.

"The Human Genome Project may well have the greatest direct impact on humanity of any scientific initiative before us today", said David Shirley, Director of the Berkeley Laboratory.

Covertly, this research has been going on for years, at DULCE LABS.

Level #6 is privately called "NIGHT-MARE HALL", it holds the Genetic Labs. Reports from workers who have seen bizarre experimentation, are as follows: "I have seen multi-legged 'humans' that look like half-human / half-octopus. Also Reptilian-humans, and furry creatures that have hands like humans and cries like a baby, it mimics human words... also huge mixture of Lizard-humans in cages". There are fish, seals, birds and mice that can barely be considered those species. There are several cages (and vats) of Winged-humanoids, grotesque Bat-like creatures...but 3 1/2 to 7 feet tall. Gargoyle-like beings and Draco-Reptoids.

Level #7 is worse, row after row of thousands of humans and human mixtures in cold storage. Here too are embryo storage vats of Humanoids in various stages of development.

"I frequently encountered humans in cages, usually dazed or drugged, but sometimes they cried and begged for help. We were told they were hopelessly insane, and involved in high risk drug tests to cure insanity. We were told to never try to speak to them at all. At the beginning we believed that story. Finally in 1978 a small group of workers discovered the truth. It began the Dulce Wars". (and a secret resistance Unit was formed) Note: There are over 18,000 "Aliens" at the Dulce Base.

In late 1979, there was a confrontation (over weapons), alot of Scientists and Military personnel were KILLED. The Base was closed for a while....But, it IS currently active. Note: Human and animal abductions (for their Blood and other parts) slowed in the mid-1980s, when the Livermore Berkeley Labs began production of artificial blood for Dulce.

William Cooper states: "A clash occurred where in 66 people, of our people, from the National Recon Group, the DELTA group, which is responsible for Security of all Alien connected Projects, were killed."

The DELTA Group (within Intelligence Support Activity) have been seen with badges which have a black Triangle on a red background.

DELTA is the fourth letter of the Greek alphabet. It has the form of a triangle, and figures prominently in certain Masonic Signs.

\*EACH BASE HAS ITS OWN SYMBOL. The DULCE Base symbol is a triangle with the Greek letter "Tau" (T) within it and then the symbol is inverted, so the triangle points down.

\* The Insignia of "a triangle and 3 lateral lines" has been seen on "Saucer (transport) Craft", The Tri-Lateral Symbol.

\* Other symbols mark landing sights and Alien Craft.

## INSIDE THE DULCE BASE

Security Officers wear jumpsuits, with the Dulce Symbol on the front upper left side. The standard hand weapon, at Dulce is a "Flash Gun", which is good against Humans and Aliens. The ID card (used in card slots, for the doors and elevators) has the Dulce Symbol above the ID photo. "Government Honchos"

use cards with the Great Seal of the U.S. on it. "The Cult of the All-Seeing Eye" (THE NEW WORLD ORDER) 13, "666" The Phoenix Empire....."9" "Illuminism"... "One out of many".

After the Second Level, everyone is weighed, in the nude, then given a Uniform. "Visitors" are given an 'off white' uniform. In front of ALL sensitive areas are scales built under the doorway, by the door control. The persons card must match with the weight and code or the door won't open. Any discrepancy in weight (any change over three pounds) will summon Security. No one is allowed to carry anything into or out of sensitive areas. All supplies are put thru a Security conveyor system. The Alien Symbol language appears a lot at the Facility.

During the construction of the Facility (which was done in stages, over many years) the Aliens assisted in the Design and Construction materials. Many of the things assembled by the workers, were of a Technology they could not understand, yet...it would function when fully put together. Example: The elevators have no cables. They are controlled magnetically. The Magnetic system is inside the walls.

There are no conventional electrical controls. All is controlled by advanced Magnetics. That includes a magnetically induced ( phosphorescent ) Illumination System. There are no regular light bulbs. All EXITS are magnetically controlled. Note: it has been reported that, "If you place a large magnet on a entrance, it will affect an immediate interruption. They will have to come out and reset the system."

#### THE TOWN OF DULCE

The area around Dulce has had a high number of reported Animal Mutilations. The Government and the Aliens used the animals for Environmental tests, Psychological Warfare on people, ect. The Aliens also wanted large amounts of Blood for Genetic, Nutritional and other reasons.

In the book, "ETs & UFOs - THEY NEED US, WE DON'T NEED THEM" by Virgil "Posty" Armstrong, he reports how his friends (Bob & Sharon) stopped for the night in Dulce and went out to dinner. "They overheard some local residents openly and vociferously discussing Extraterrestrial Abduction of townspeople for purposes of experimentation." The ET's were taking unwilling human guinea pigs from the general populace of Dulce and Implanting Devices in their heads and bodies. The townspeople were frightened and angry but didn't feel that they had any recourse since the ET's had our Governments knowledge and approval.

Recently, participants in a "field investigation" of the area near Archuleta Mesa, were confronted by two small hovering 'Spheres'. They all became suddenly ill and had to leave the area.

#### "THE MONITORS": ABDUCTIONS

In the Fifties, the EBES (Greys) began taking large numbers of humans for experiments. By the Sixties, the rate was speeded up and they began getting careless (they didn't care). By the Seventies, their true colors were very obvious, but the "Special Group" of the Government still kept covering up for them. By the Eighties, the Government realized there was no defense against the "Greys". So... programs were enacted to prepare the Public for open contact with non-human "Alien" Beings.

The "Greys" and the "Reptoids" are in league with each other. But, their relationship is in a state of tension.

The "Greys" only known enemy is the Reptillian Race, and they are on their way to Earth. (Inside a Planetoid).

Some forces, in the Government, want the Public to be aware of what is happening. Other forces (The Collaborators) want to continue making "whatever deals are necessary" for an Elite few to survive the conflicts.

The Future could bring a Fascist "WORLD ORDER" or a transformation of Human Consciousness (Awareness). The struggle is NOW...your active assistance is needed. Prepare! We must preserve Humanity on Earth.

#### MIND MANIPULATION EXPERIMENTS

The DULCE Base has studied Mind Control Implants, Bio-Psi Units, ELF Devices capable of Mood, Sleep and Heartbeat Control, ect,ect.

D.A.R.P.A. (Defense Advanced Research Projects Agency) is using these Technologies to manipulate people. They establish 'The Projects', set priorities, coordinate efforts and guide the many participants in these undertakings. Related Projects are studied at Sandia Base by "The Jason Group" (of 55 scientists). They have secretly harnessed the Dark Side of Technology and hidden the beneficial Technology from the Public.

Other Projects take place at "AREA #51" in Nevada..."DREAMLAND"[Data Repository Establishment and Maintenance Land], ELMINT[Electro-Magnetic Intelligence], CODE EMPIRE, CODE EVA, PROGRAM HIS[Hybrid Intelligence System], BW/CW, IRIS[Infrared Intruder System], BI-PASS, REP-TILES.

The studies on LEVEL #4, at DULCE, includes Human-Aura research, as well as all aspects of Dreams, Hypnosis, Telepathy, ect. They know how to manipulate the BIOPASMIC BODY (of Man). They can lower your heart beat, with Deep Sleep "DELTA WAVES", induce a static shock, then re-program via a Brain-Computer Link. They can introduce data and programmed reactions into your Mind (Information impregnation - the "Dream Library".

We are entering an ERA of the Technologicalization of Psychic Powers.

The development of techniques to enhance man/machine communications, Nano-Tech, Bio-Tech Micro-Machines, PSI-War, E.D.O.M. (Electronic Dissolution of Memory), R.H.I.C. (Radio-Hypnotic Intra-Cerebral Control) and various forms of behavior control (Via Chemical Agents, Ultra-Sonics, Optical and other forms of EM Radiation). The Physics of "Consciousness."

#### BETTER LIVING THROUGH BIO-TECH???

The development of "BIO-TECHNOLOGIES" will mean a revolutionary change in the Life of every Human Being now on Earth!

#### WARNING...FASCISM IS "CORPORATISM"

We have passed the point of no return, in our interaction with the "Alien" Beings. We are guaranteed "A Crisis" which will persist until the final REVELATION (or conflict).

The crisis is here. Global and real. We must mitigate or transform the nature of the disasters to come and come they will. Knowing is half the battle. Read the book, "THE COSMIC CONSPIRACY" by Stan Deyo.

#### THE PHANTOM EMPIRE: ABOVE THE LAW



The Dulce Base is run by a "Board."

The Chairman of the Board is JOHN HERRINGTON. JIM BAKER (of TENN) is the CIA link to Dulce. House Speaker JIM WRIGHT, D-Texas (the nations third highest office) is Treasurer at Dulce.

There is currently a power struggle going on. As Rep. William Thomas, R-Calif., put it... Part of Jim Wrights problem is; "HE fails to understand what's equitable and fair. It's the arrogance of power." Even among his fellow Democrats, many find Wright to be "uncomfortably aloof". Wright's operating style leaves him vulnerable.

Most meetings of "The Dulce Board" are held in Denver and Taos (N.M.). Former New Mexico Senator Harrison "Last man on the Moon" Schmitt has full knowledge of Dulce. He was one of 7 Astronauts to tour the Base.

In 1979, he held an "Animal Mutilation" conference in Albuquerque, N.M. This was used to locate researchers and determine what they had learned about the links between the "Mute" operations and the Alien/Government.

Senator BRIAN (Nevada) knows about the "ULTRA" Secrets at "DREAMLAND" and Dulce. So do many others in the Government...this is what the UFO Researchers are up against.... so BE CAREFUL...they have KILLED to keep this info Secret. You now know more than they want you to know.

They also have underwater Bases off the coast of Florida and Peru.

More detailed information will be released in the near future, photos, video tapes, documents, ect. Watch out for AGENTS among you now.

In the 1930's, "DIVISION FIVE" of the FBI knew about the "Aliens".

A Fascist cabal, within this country, had John Kennedy assassinated.

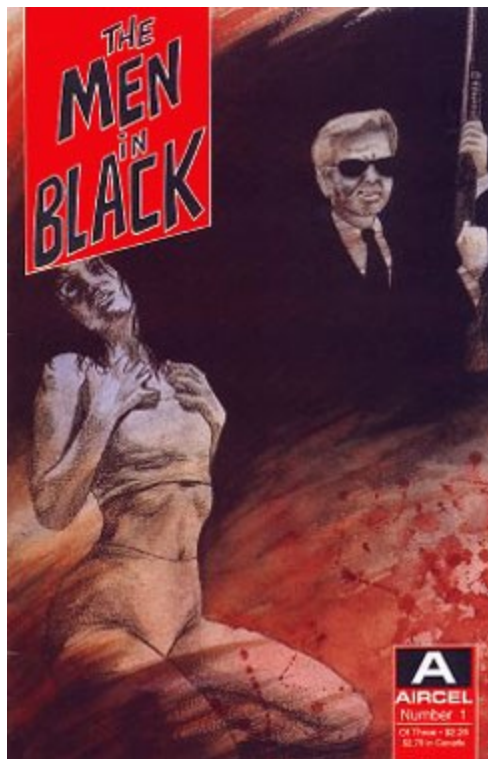
Look to the links, within the larger Umbrella... the "WEB" of a fascist totalitarian secret police state...within the Pentagon, Joint Chiefs of Staff, DIA, FBI (Division Five), DISC/DIS and the CIA. Note: The DEFENSE INVESTIGATIVE SERVICES Insignia is a composite of the Sun's Rays, a ROSE, and a Dagger, symbolizing "The Search for Information, Trustworthiness and Danger". Other links are Nazi scientists (who had contact with the "Aliens"), the S.S., Satanists, Permindex, Exxon, the Mafia, NBC, ect, ect.

This links with Caves used for "Initiation Rites" (all over the world)... ancient Vaults, Retreats, Alien Bases, and INNER-EARTH CIVILIZATIONS.

<http://www.sacred-texts.com/ufo/dulce.htm>

## MIBs in the woodpile?

January 6th, 2010 | Author: [thomascosgrove](#)



The following are the search results of the <http://www.mufon.com/> data base for Arizona since 11/01/09 to date. While this sample is in most regards typical of a two-month window, some reports do stick out rather well. Therefore I've included the MIB report from 12/20/09, a late report from 2/15/88.

While I find "late" reports rather frustrating (glad I'm NOT the investigator), this one seems interesting due to the "arm's length" aspect of the reporter and its clear style. Besides that, who doesn't love a good MIB story?

2009-12-282002-09-3010 circular objectsArizona  
[US21208](#)

2009-12-282002-10-1210 circular objectsCasa Grande  
Arizona  
[US21207](#)

2009-12-252009-09-02Metalic disc sighted over alter valley sept 20093 points  
Arizona  
[US21139](#)

2009-12-252009-12-246 – 8 orange pairs of lights hovering/flying in sky in non-strict  
formationTucson

Arizona  
US[21138](#)

2009-12-232006-11-30circular,red dots around the diskArizona  
US[21103](#)

2009-12-232006-11-30circular,red dots around the diskArizona  
US[21102](#)

2009-12-201988-02-15TWO MIB CONFISCATE CLOSE-UP OF UFO PHOTO AND  
THREATEN LIVES PHOENIX  
Arizona  
US[21068](#)

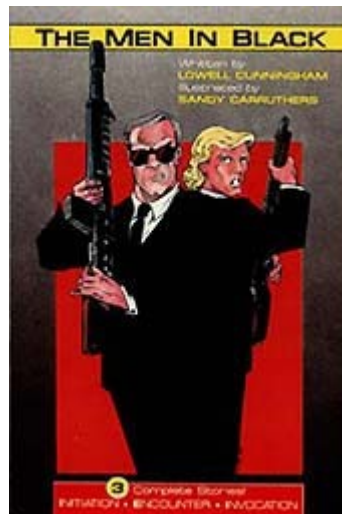
2009-12-161982-01-28My Uncle and Freind watch a ufO Not far. It Seemed MIghty Big.Pheonix  
Arizona  
US[21012](#)

2009-12-152009-12-143 Red Orange colored lights over mountian illuminating mountian  
sideCedar Creek  
Arizona  
US[21001](#)

**Case Number:** 21068  
**Log Number:** US-12202009-0007  
**Submitted Date:** 2009-12-20 16:21 GMT  
**Event Date:** 1988-02-15 21:00 GMT  
**Status:** Assigned  
**City:** PHOENIX  
**Region:** Arizona  
**Country:** US  
**Longitude:** -112.081  
**Latitude:** 33.4979  
**Shape:** Disc  
**Description:** Around 1989 I was working at a restaurant in Scottsdale, Az. I was speaking

with a customer and somehow we were on the subject of life on other planets. I recall saying something to the effect of "The odds are that there has to be life on other planets, due to the vast number of planets". Another customer overheard me say this and said "Do you really believe that"? I said "Yes, I do". He said "Next time I come in, I am going to show you something". He had a serious demeanor as he said this. I had no idea what to expect. A few days later he came in and had a brief case with him. This brief case was totally dedicated to this UFO encounter he had experienced. He showed me a map of Arizona, where he had outlined the area that he had encountered a UFO in. It was the Roosevelt Lake area, north of Phoenix. He then pulled out a Polaroid photo he had taken. I stared at that photo for 20 minutes. It is THE most realistic photo of a UFO I have ever seen. And it was VERY close up. The photo was taken from about 50 ft. away. It was taken at night and the ONLY light source was from the UFO itself! It was so apparent that I didn't even ask if he had used a flash. I was obvious he had not, so I just said, unassumingly, "Why didn't you use a flash"? His eyes got huge, and he said "Are you kidding! They would have seen me". The reason you could tell the light was emanating from the craft was because the foliage to the left on the image was illuminated from behind. The foliage was in front of the craft, from the vantage point of the camera. The leaves were black, not green, as would be expected if the light source were from the camera. You could see only the outline of the foliage, not detail, as one would see from a camera flash. The craft was the classic disc-shaped kind. It was gray and metallic looking. The lower portion of the craft was concealed, due to a cliff overhang that it was hovering behind. I would gauge the craft to be about 60 ft. from side to side. The craft was about 50-60 ft. away from the camera-taker. The most fascinating part on the craft was the light on it. There was an orb, about the size of a basketball, that was circling the middle, most wide part of the craft. The orb was pure white in color, with not a tinge of yellow or blue. The reason you could tell the orb was circling the craft was due to the fact that the camera had captured a tail trailing the orb, as would a tail on a comet. So I tell they guy, after freaking out on the amazing authenticity of his photo, that he has to show this to someone. He said "I plan to. There is a professor/ufologist at ASU that is interested in this". So I see the guy several days later and he said he had taken the photo to the ASU (Arizona State University) guy. He said the ASU professor also said it was the best UFO photo he had ever seen. I see the guy several days later, again, and ask him what the ASU professor guy is doing with the photo and such. He starts acting really weird. He wouldn't answer me. I asked him again. His demeanor was that he was pissed off. He said to me "I'm not allowed to talk about it". I said "What? What do you mean?" He said "I'm not allowed to talk about it". He is really agitated. I can't resist, so I said "Oh come on". He said "I'm not allowed to talk about it. Two men from the government showed up at my door and said I am not allowed to mention this again, or I will disappear.

They took the photo from the ASU professor and threatened him as well". Since then I have read much info on UFO phenomena. Interestingly, much of what I have read about MIB, is that they appear at someone's door, as a pair of two men, to threaten the experimenter. Mind you, his experience was long before MIB, the movie, came out, and MIB became part of general consciousness. I had never heard of MIB at this point. The internet had not taken off yet, so he didn't research the MIB phenomena to add credence to his story. He didn't need to anyway, with that photo! It now makes sense to me that these government guys take only the good photos, and leave the junk out there. Thus when the general public views the photos, they assume the whole phenomena is people's imaginations, or pranks. They purposely allow the crappy photos to prevail. If anyone knows who the ASU professor may have been, could you please contact a MUFON representative. I cannot imagine there were many ASU professors/ufologists at the time.



Men In Black, MIBs or Messengers of Irritating Brainfry, have occupied a significant niche of the popular culture since their first pairing with the UFO phenomenon in the early Fifties.

The term **Men in Black (MIBs)**, in popular culture, is used in UFO conspiracy theories to describe men dressed in black suits, sometimes with glowing eyes or other monstrous features, claiming to be government agents who attempt to harass or threaten UFO witnesses into silence. "All MIB are not necessarily garbed in dark suits", writes American researcher Jerome Clark. "The term is a generic one, used to refer to any unusual, threatening or strangely behaved individual whose appearance on the scene can be linked in some fashion with a UFO sighting." (Wikipedia)

In 1963, a book called "Flying Saucers and the Three Men In Black" was published by Albert K. Bender.

Albert K. Bender was running an organization, in 1953, called the International Flying Saucer Bureau (IFSB) and editing a publication called Space Review. In his '63 book, Bender relates a visit from the MIBs, and appears to have coined the term, at least as we currently use it.

Both the IFSB and the Space Review were suspended after this visit, but as you read this the stories of this type of intimidation are common. Somewhat.

The book also introduced into the lore “three beautiful women, dressed in tight white uniforms.” Like their male counterparts in black, the women in white had “glowing eyes”. For more details of this event, go here:

<http://www.ufoevidence.org/documents/doc1695.htm>.

(I haven't run across anything about the “Three Women in White”. Anyone?).

As some will already be aware, during the investigation conducted at Point Pleasant, West Virginia by John Keel, there was a series of strange sightings of what some call ‘Men in Black’ as well as a few odd phone calls made to John Keel (and apparently some others) by a man who called himself ‘Indrid Cold.’ By phone, Cold offered some cryptic “prophecies” that had no real relation to the sightings of Mothman and UFO activity going on in that area during 1966 & '67.

Personally, I wonder if the bizarre phone calls from Indrid Cold may have been an example of what Loren Coleman refers to as “Twilight Language”. More on this in another post.

My favorite Point Pleasant MIB encounter? The Man In Black confronting the local reporter/publisher, trying to intimidate, then suddenly attracted to a ball-point pen.

No.

REALLY fascinated,

like a pack rat to a lost engagement ring.

Always cracks me up...



For more intriguing thoughts on the MIBs, don't forget to visit Andy Colvin's LOWFI Washington <http://forteanswest.com/wordpress-mu/washingtonlowfi/> while you're here, as well as Adam GoRightly's at <http://forteanswest.com/wordpress-mu/norcallowfi/>.

Both these guys represent LOWFI contributors who have had encounters.

Please share yours with us!

For a short list of other related articles and such, go here:  
<http://www.ufoevidence.org/topics/meninblack.htm>.



Posted in [UFO](#), [US Government](#), [Uncategorized](#) | Tags: [Arizona UFO reports](#), [MIBs](#), [MUFON](#) | [No Comments](#) »

## DULCE BASE

December 17th, 2009 | Author: [thomascosgrove](#)

Some years ago, Jacques Valle was engaged in an involved discussion with two colleagues regarding the rumors of the existence of an underground facility in or near Dulce, New Mexico. After listening for some time, he remarked "Who takes out the garbage?".

A large underground manned structure of the type and size commonly attributed to the "secret" base near Dulce would generate a significant amount of ground traffic, air traffic, waste, power requirements, water, food and material deliveries.

Dulce is a small town with a population of 2600, and is the center for the Jicarilla Apache Reservation. Traffic and transport as discussed above

would surely be noticeable. How does a government or corporation hide large facilities? In plain sight but disguised is the usual practice.

The article contains images of the San Juan Generating Station located 15 miles west of Farmington, New Mexico. Eighty miles to the east is,

of course, Dulce.

Hmmm. What lies beneath?

**J.P. Skipper** 's article below offers some interesting questions and comments regarding the possibility of just such a place near Dulce, New Mexico.

(reprinted with permission. Check out his jam-packed site at <http://www.marsanomalyresearch.com/index.htm> )



## DULCE BASE

### Report 174

December 3, 2009

Joseph P. Skipper

J.P. Skipper can be contacted at: [jskipper@marsanomalyresearch.com](mailto:jskipper@marsanomalyresearch.com)



The above 1st image provides a wide-angle context view of the Dulce military facility located in New Mexico just south of the Colorado Mesa Verde National Park mountainous area. It is also located just southeast of the intersection of the state boundary lines of New Mexico, Arizona, Utah, and Colorado known as the 4-Corners area. The 4-Corners is also infamous in the conspiracy and UFO communities mostly because of its proximity to the Dulce base and the many UFO sightings that have been witnessed in this area. Dulce is suppose to be a super secret place except for the slight problem of course of it being infamous.

Many of you are no doubt aware of the Dulce base and the stories that have circulated for years about it. What is known is that this is an Air Force facility and the great majority of this facility is underground. By underground, I do mean very deep underground. In fact, I suspect we would be shocked at just how deep down and how far laterally it reaches into other states. The considerable north and south mining spoil or tailings on the east side of the site visible in the above 1st image and pointed out by the yellow arrows demonstrates that there is in fact a deep mine here and over it is this surface facility.

For any of you who may not be aware of the Dulce Base story, what makes it so infamous is primarily an event some allege to have occurred there back in the 1970s or 1980s. It seems that when the place was being developed in its lowest region at that time around the 7th level, the human team broke through into an even lower chamber and that chamber had aliens in it. There proceeded to be a fire fight with the result that most of the humans did not survive. Just do the online search engine thing on the Dulce Base and you will find out the details of what is suppose to have happened back then and subsequently as humans and aliens are suppose to have developed partnerships in genetic experiments on human populations in exchange for technology.

Now be forewarned that this is not a pleasant story and is in fact as ugly as they come. Further, it suggests a capitulation of human leadership into a hell of compromises both in that time and on into our time that, if true, is the legacy of what we are dealing with today on some secrecy issues. It is that alien/extraterrestrial interaction potential that is the reason for this reporting on Dulce. Remember, only in beginning to understand a thing can we begin to come to grips with its possibilities. If you think you're up to it, start with the link below for just some basics and proceed from there as your psychology permits.

[http://en.wikipedia.org/wiki/Dulce\\_Base](http://en.wikipedia.org/wiki/Dulce_Base)

Now I have no knowledge on the truth any of this story but Dulce as a secret underground complex is at least real. Further, our American tax dollars are paying for it. So it isn't going to hurt for we in the public to take a look here and try to gain a little more insight into this very secret place that we are paying for.



The above 2nd image demonstrates what the principle part of the facility looks like in a bit closer view from above. The dark rectangular area in the center of the base represents its massive main self contained power generating center. The broad dark area to the right are coal fields just in case the facility in an emergency had to resort to this type of easily storable fuel material. Surface personnel concentration is in the lower part of the surface facility center and just left of center.

Now working up to the left/west side and upper left corner of the facility represents power facilities that are fed into Dulce from an external source. This appears to be from remote massive high tech "Arizona Public Service Power Plant" miles south of and across a east/west highway and waterway from this location and which I'm not showing here. It is on Morgan Lake which is partially artificial in origin, it also shows signs of mining activity with extensive spoil areas, large retention ponds, and it is in New Mexico rather than Arizona even though it is suppose to be an Arizona serving operation.

So the Dulce facility has massive redundant power supply systems both external and internal. That remote power comes into the center left (west) side of Dulce and runs to the right (east) across the center of Dulce and out into the spider network of a huge raised overhead coal conveyor system that you see in the above 2nd image.



The point is that just about everything seen above ground is all about and dedicated to massive power generation and distribution and air handling as a support function for something else underground and not as an end unto itself. In other words, the only thing we can see on the surface is just the support facilities for whatever is below underground. Further, the massive amount of power and air handling utilized here is a direct indicator that whatever is below is really big and really deep.

Above and immediately adjacent to the facility and to the lower left but not shown in the above 2nd image are huge multiple rectangular retention ponds. These are no doubt for toxic wastes associated with the very deep mining operation and perhaps with whatever high tech self-contained power source is being employed here.

If this is a base run by the Air Force as has been indicated by others, it should be noted that there is no air-strip nearby serving just this facility. However, there is one some miles to the southeast in a civilian center. Likely this site connects underground with other distant military facilities as needed. The one thing that is abundantly clear though is that there is a massive facility here and it is underground and the only entity that could afford this kind of massive operation is the government and/or military.





The above 3rd and 4th images demonstrate the considerable presence of air handling fans at the facility. The massive numbers of them along with the mining spoil/tailings clearly confirm the extensiveness of the underground facility. It must be remembered that facility personnel underground must be able to breath quality air and deep mining will almost certainly produce both substances and gases toxic to humans as well as limit the amount of oxygen available.

These air handling fans are obviously here to exhaust toxic gases and to introduce and maintain quality breathable air below. Their numbers and size and the need to move so much air volume tells us that the facility is indeed very deep as well as massive and that a lot of people needing to breath decent air to function properly are present here.

Note the three large retention ponds partially cut off at the top of the image. Take special note of the glowing orange material in the pond on the right looking a bit like lightening bolts or fire. Toxic substances produced by deep mining must be dealt with as well as possibly what ever toxic byproduct is produced by the underground facilities and main power source. Let's face it, you don't want to go for a swim in this pond unless you want your body to be quickly corroded away into goo. In fact, dipping your big toe in there could result in pulling back a nub.





The above 5th image is of the dark rectangular area in the center of the surface facility showing four massive units, two larger and two smaller. These almost certainly are boilers representing the facility's above ground self contained power source. The light color straight lateral dual lines you see in the lower part of the image are elevated conveyor systems originally designed to deliver coal from the dark coal fields on the east side of the facility.

Note that they go off to the right and wind up in a spider hub there. However, it should also be noted that power transmission lines come straight in from the outside power source on the left, across the facility, and matching the direction of the larger conveyor systems perfectly. So these coal conveyor ducts by design likely carry outside power lines elevated across the facility just above the other facility surface components to the conveyor spider hub and then go down into the underground.



The above 6th image demonstrates the network of large coal conveyor duct lines in the main coal field. Such enclosed conveyor systems start out low in the exterior coal bed and transport the coal up an incline to near the top of tall block houses along the line filling them. Then another conveyor starts the process again from the bottom of the block house to the top of the next block house and so on until it reaches its destination for consumption by the giant boilers. Some refining may or may not occur in any intermediate block houses depending on the internal design.

This provides a brief look at what we can visibly see of the Dulce facility proper on the surface. It confirms that Dulce is quite real and that there is some kind of huge facility underground that the large above surface facility supports. This facility was for a long time a secret likely dating back into the 1960s and 1970s until stories about some very bad sounding events happening here started circulating by so called whistle-blowers. So the question becomes, is it now obsolete and now only a product of decades long past?







The above 7th and 8th images shifts the scene to a site roughly 30 km or 18 miles northeast of Dulce. The 7th image is an older one I took many months ago and the 8th is of the same exact location taken for this report a short time ago. As you can see there have been significant changes not only to the site itself but also in the image resolution in being able to view it.

To reach this site one exits from the east side of the Dulce facility mining area traveling northeast via a big wide paved road visible in the upper right corner of the 2nd image and one comes to the above site via the paved road you see in the above 7th and 8th images. The 18 mile stretch of road is named the La Placa Mine Road. It essentially terminates at both sites and is obviously not meant as a public road. It in fact clearly appears to be an extension of the Dulce facility to this more distant surface location.

What brought my attention to this site initially was following the road and discovering the strange zig-zag patterns in the terrain as you see them in the 7th image. This is clearly another mining spoil/tailings site and the pronounced sharp zig-zag patterns are very strange and note that they are confined only to the spoil/tailings dump material. They seem to be a little too organized and strange to be simple weather erosion patterns forming ridges in the relatively soft dump material.







However, that isn't all. The above 9th and 10th images are of another spot in this same remote spoil/tailings site. Note the many very pronounced uniform size and shape individual objects in the 9th image. The 9th image was taken of this site many months ago and the 10th images taken only a short time ago for this report. As you can see, the changes are once again significant. This type of many individual same size and shape uniform objects evidence is scattered all around this site and the spots imaged here are just representative samples of it.

Once again the resolution in the current views of these individual objects has been fairly severely visually compromised. If this image compromising is intentional, the question quickly becomes why? What is so important about this strange looking zig-zag pattern and many individual objects evidence that someone felt it needed to be obscured at this remote dump site?

What ever the reason might be, despite the image obfuscation, one thing that we can still clearly see is that there has been a lot of work in and additions to this dump site since the prior images were taken. That means that there is active mining producing additional dump material resulting in these ongoing changes. What is also significant is that there is just a dump site going on here function wise and no other kind of mining activity. If this is suppose to be the La Placa Mine site, it obviously isn't that. It is only a

dump site and Dulce base at the other end of that dedicated road is by far the most likely candidate as the source of the dump material.

That brings us back to that big dedicated paved road connecting this site with the Dulce site. Is the Dulce excavation material being transported to this distant site over this road to try and fool eyes in the sky about the degree of excavation activity at the Dulce site? Or, could it be that the Dulce underground site extends 18 miles underground to near this remote site and the dump material is now being fed to this site via underground passages?

What ever the answer is, it is clear that the Dulce underground facility is likely an ongoing monster in size as well as the scope of its activity and that is something that this surface evidence does tend to verify. Some speculate that the Dulce site now extends far out underground to other military sites in other states. I have no idea of the truth of this but one can clearly see from what is on the surface that massive underground excavations are still going on here.

Here's another thought. Remember those many individual same size and shape objects grouped in large areas all around the remote site? Some of them are also at the main Dulce site. Could these be compacted excavation material cartridges that is a characteristic of a some kind of deep tunnel boring machines (TBMs) used to develop the underground complex? Such cartridges would be an excellent candidate for transportation from the Dulce facility to the remote site over the paved road and explain the uniformity of the objects. Yes it is speculation but not without its logic. Boring machines you say? What need does the Air Force have for such expensive monster underground machines?





The above 11th image is a photograph by the U.S. Department of Energy, Nevada Operations Office, photo number MX-027-30 dated December 14, 1982. Note the Air Force insignia on this Tunnel Boring Machine (TBM) and remember that this picture is about 27 years old meaning that we're looking at 27 year old technology here. Can you imagine a giant machine like this underground on a railroad track hauling behind it a giant compactor forming huge cylinders of excavated and compacted material fitted to the tunnel sizes that are then transported to the surface and hauled originally via highway to the remote dump site forming the individual objects seen in the 9th image. Could it be a clue?

Obviously the Dulce base is very real as is the very deep subterranean aspect of it. The complex is obviously huge and development there underground is clearly ongoing and current. However, whether this involves aliens or not is not something that this visual evidence cannot answer. The problem with the revelations/stories that circulate about Dulce is that the most successful secrecy counter measure is to spread so many different stories, including even those uncomfortable for secrecy, so that one can never get an objective bead with confidence on what is true and what isn't.

Like a dose of medicine that one should take for one's own good, you need to know something about this real world secret place in so far as visual surface evidence can reveal it. That way, should the issues of alien presence and partnerships and/or Nibiru is coming preparation arise again in the future, maybe it will not be so easy to deflect innocent naive public thoughts away from determining the merit of such issues and onto pointless questions of whether such a place exists at all or not or whether something is actively happening there or not.

Understand that my purpose in examining places like this is not to reveal secrets to America's adversaries. In these modern times, such adversaries have their own unobfuscated satellite views and their own professional experts that examine surface places like this in much greater detail than we can here through this often obfuscated Google Earth imaging. They know far more about this place and others in minute detail than we do here in the Google Earth imaging.

Just remember that some truths, like medicine that is ultimately good for you, is rarely pleasant. Secrecy types need to relax and understand that this knowledge is part of the growth process and necessary in ramping up to face the real world issues coming. In other words, no one is criticizing or threatening you here, it's just growth.

ADDENDUM (added 12/16/2009)

You should be aware that I have received a few emails (3 so far) from sincere people cautioning me that the facility I have reported on above is not the Dulce Base but simply the New Mexico San Juan Power Plant. Their point being that I have misidentified the place in my above reporting. These observations have uncovered a fault in my reporting even if not the one they are pointing out. My fault is that I failed to mention that the above ground evidence in the above reporting is indeed named the San Juan Power Plant.

You see, after years of doing this kind of reporting that so often also happens to impinge on the clandestine activities of others and placing so much emphasis on visual evidence, I assumed that the visual evidence I pointed out in my above reporting was obvious enough to overcome the personal experience of some that might be associated with the places I report on. That was a mistake. What is obvious to me or any one person may not necessarily be obvious to others.

Since this website's content tends to be universal in its appeal covering so many walks of life, I should have anticipated that those more closely associated with the surface San Juan facility and familiar with it but not necessarily with its underground clandestine aspect would be put off a bit by my reporting. Further, some of those doing the Google Earth search to verify would encounter the Google labeling of this place that it is just the San Juan Power Plant giving them pause as well. No my reporting has not misidentified this place but it was insufficient in taking all these types of reactions to my reporting into consideration.



If a clandestine operation is trying to be super secret, it often historically depends on being located at remote places insulated by desolate terrain few wish to intrude into and supplemented by guard assets. Area 51 as well as Pine Gap and Tower Zero in Australia are examples of that but all the unusual visual activity in the sky around such facilities eventually and predictably erodes their secrecy value. When it comes to secrecy, unusual visual activity observable by very many civilians is always a bane. In other words, surface isolation is not always effective when it comes to secrecy.

The secrecy alternative of going underground takes care of a lot of the visual observation problems but preparing the space underground then becomes a significant problem in the form of what to do with the waste produced by excavations. If the underground facility is going to be very extensive, the waste in the form of mining spoils or tailings can easily compromise secrecy. So you locate at an already existing mine that already has spoil/tailings grounds on the surface that some locals are already familiar with seeing.

You must have a cover like a spy might operate out of an innocuous antique store as their front operation. So you install an above ground power plant at or near the old mining site that in theory burns coal from the nearby old mine. It is big and the surface excavations for the power plant installation in 1973 in this case serve as cover for starting the underground facility. You have two fronts working for you, one being the power plant on the surface and the other being the subterranean coal mine. These fronts employ locals who in turn become dependent of that employment and quite naturally favorable to the place since it supports lives and families over the following decades. It doesn't pay for them to be too suspicious of anything and normally they aren't. You just keep their focus on the front operations and away from any clandestine activities below.

So you gradually dig out your underground facility far down deep below. The clandestine digging waste mixes with the old coal mining spoils and fresher power plant excavations. However, your underground facility is very ambitious and there's just too much waste over time that you know will eventually draw curious local attention. You anticipate this and start spreading the waste out at other remote but reasonably convenient sites like the site of another big power plant just a few miles away to the south that you also installed and also at an old mine site northeast.

The problem is that this may put off your own average civilian but it is not really going to put off professional clandestine observers employed by adversaries looking at the evidence from their own satellites with close clear views far better than those available on Google Earth. They know about the spreading out of the waste strategy because many of them are likely doing the same thing in their countries with their covert facilities facing similar problems. They can add up the spoil volume and get a pretty good idea of how extensive your underground activities are far beyond the scope of simple coal mining and whether your activities are current or not. Any other consideration is simply delusion.

Competitors and adversaries clearly see the huge surface retention ponds that you can't hide where you are having to deal with deadly toxic wastes from very deep mining. They clearly see the huge air handling fan systems required to make your subterranean operation viable for human activity. They monitor this for many years and even decades tracking all the surface changes also an unavoidable result of your activity. One of those changes over time is the great number of dumped uniform cylinders or cartridges of compacted waste stacked around at the spoil sites identifying the use of TBMs (Tunnel Boring Machines) that you allowed to sit around too long before bulldozing them out into smoother profiles in the spoil sites. Remember, being secrecy types themselves, they think like you do and not like innocent civilians.

Let's face it, what you are doing deep down in fulfilling the purpose of creating an underground facility may still be a secret from most distant prying eyes but that there is a facility and its likely extent and where its main activity you don't mind them seeing is located (San Juan) is no secret at all except possibly to the people of the country or area in which this is happening. I follow evidence and the visual evidence of an extensive underground complex beginning with the San Juan facility location is visible in publicly available programs like Google Earth. You could have hidden them if you truly wanted to. I cannot help what the front operation is formally named or what local personal experience with it may or may not be.

Now the fight with aliens story as told is one of an underground deep mining complex operation by the Air Force that is suppose to be an underground base named Dulce and it is suppose to be a super secret facility in the 4-Corners area. Remember, I cannot and do not make comment on the truth of this story as that cannot be answered by this satellite visual evidence even as the implications of its presence is another matter. As for UFO sightings around "Dulce" the town 80+ miles east of San Juan, that is another matter. I am reminded that UFO sightings are also thick in the 4-Corners multi state area nearby the facility that I have reported on here and not that far from the town of Dulce.

Yes the facility I've reported on may be formally named the San Juan Power Plant but it also fits the Dulce Air Force deep tunneling operation profile just fine, if a place by that name really exists. The fact that there is a town east of this facility named Dulce is just incidental to the visual evidence at hand here at San Juan and likely merely misdirection.

The huge amount of spread out mining spoils locations on the surface, some located at San Juan, some located at the other power plant to the south, and some at the more remote La Plata site northeast far exceed any claim of a coal mining operation at San Juan. This satellite visual evidence tells the story of an extensive deep tunneling complex initiated below San Juan well beyond the scope of a coal mine or surface power plant in use for civilian purposes. The huge toxic waste retention ponds and the tremendous amount of air handlers also tell the real story of a very deep complex underground here at San Juan.

If the alien fire fight story is real and there is a Dulce Air Force underground facility somewhere in this general area, this is it. Remember that 27 year old image above of that Tunnel Boring Machine with the Air Force emblem on it clearly indicates that the Air Force is involved some where in this activity. If there isn't a facility named Dulce because the alien story isn't real, then the San Juan site is the primary site of some kind of underground super secret facility yet unnamed and the only one that can afford such extensive and costly development without monetary return expectation can only be government and/or military.

Contrarily, if some researchers/hunters in the past went to the town of Dulce, New Mexico to investigate the alien fire fight scenario and not just some UFO sightings, then they likely fell into misdirection and went to the wrong place. San Juan and its environs has the visual hard evidence on the surface and it is the place as described and the real place to start.

Super secret military facilities that have outlived past secret usefulness are labeled for what they are in Google Earth as is the case with Area 51 clearly identified in the program. That is no accident. Super secret military facilities that are still fully and effectively serving their intended secret purpose like the so called Dulce Base are not going to be identified by labels in Google Earth and of course will always appear as something more mundane and as something far from their true clandestine function.

San Juan Power Plant is a good cover and, in its capacity as the surface San Juan facility, the civilians associated with it likely do not know and do not wish to know about what is underneath them. Further, who can blame them for just wanting to live their lives without the stress of these kinds of considerations deep beneath their feet. However, I can't help what front operations portray for appearances or what local belief systems are as to what people can't believe is there. The bottom line is that the visual evidence is there at San Juan and I have no choice but to go with that and viewers must decide any merit or not on their own.

I do apologize though to anyone associated past or present with San Juan and put off by my original reporting for not anticipating their reactions and not trying to attend to them. Perhaps better late than never?

Joseph P. Skipper, Investigator <http://www.marsanomalyresearch.com/index.htm>

• 

Posted in [Uncategorized](#) | [2 Comments](#) »

## **Artifacts untouched at Ariz. bombing ranges**

December 2nd, 2009 | Author: [thomascosgrove](#)

*By John Faherty – The Arizona Republic via AP*



*No, G-Man, No!*

The following article describes how there is often more to a story that we think we know. The U.S. Air Force is working with Archaeologists, Native American Leaders, and local citizens to preserve priceless artifacts that are now on military bombing ranges and proving grounds.

Cultural Resource Management is an important aspect of preserving endangered places while educating interested parties.

This particular effort shows that, if done carefully, you CAN preserve the past, while blowing shit up.

Kinda.

PHOENIX — There are places here where the desert floor is so speckled with artifacts, it is difficult to find a step that will not fracture history.

In a place called Lago Seco, pieces of pottery, many more than 800 years old, glisten in the morning sun. Stone tools and arrowheads are covered with only a thin layer of sand.

Then in the howling silence, a massive cloud of dirt and sand rises from the ground. Moments later, a concussive blast rolls out of Manned Range 4.

The bomb was dropped from a jet neither seen nor heard.

War games and live fire are expected on this military bombing range.

But there are also delicate reminders — cultural traces — of a people who lived here beginning around 10,000 B.C.

This desert, both severe and beautiful, is home to some of the best-preserved archaeological sites in the Southwest.

They remain because the military — with an arsenal of overwhelming force — practices its craft with an eye on preserving history on the nearly 3,000 square miles of desert.

Archaeologists tell pilots where the bombs can land, and the pilots listen.

The Air Force controls access to visitors, which eliminates factors that have destroyed so many other archaeological sites: bandits who steal, hikers who squash and off-roaders who crush.

“Snake-eye, this is R-M-O Rankin. Request permission to cross Range 4 to the entrance of North Tac.”

Adrianne Rankin put down the two-way radio and waited.

An archaeologist, she has worked for the Range Management Office on the Goldwater range since 1996. Her office is at Luke Air Force Base near Glendale, but her work is in the desert.

Today, the barren desert along the Mexican border east of Yuma is mostly a place for passing through. For years, archaeologists thought it had been the same for ancient people, who moved back and forth from the Gulf of California to the north, trading seashells and salt for pottery and blossoms.

Now they see it differently.



Rankin was a member of a team that studied a village named Kuakatch in the nearby Organ Pipe Cactus National Monument.

“There is a sense of awe over how the people were living in harmony with their environment,” Rankin said. “There was a rhythm.”

As they moved, they left messages for one another that remain today. The elaborate petroglyphs, carved into impossibly hard granite, loom on rock walls, stories of a lost time.

Sometime around 1450, the people who roamed the desert flats left and never came back, leaving behind gatherings of pottery and artifacts like a family that has moved out of a house abruptly.

The Tohono O’odham tribe, descendants of the earlier residents, knew the archaeological treasures were there and left them alone. Outsiders rarely visited.

As centuries passed and the land baked in the sun, the world around it changed.

Then the troops arrived. They did not start out as conservators.

In 1941, the War Department and the Army Air Corps claimed the range. The weather was perfect for flying, and the Sonoran Desert was ideal for bombing and gunnery practice.

Landing strips were built and bombs were dropped with impunity in a rush to achieve military readiness.

No one knows now how many treasures may have been destroyed.

Today, the Air Force’s Range Management Office runs the bulk of the territory, with the western-most portion under control of the Marine Corps.

Archaeologists like Rankin survey known sites like Lago Seco. They use predictive modeling techniques to figure where other sites like it may be. Those are off-limits to military operations.



Staff biologists track the Sonoran pronghorn, an endangered species that lives on the range. Before explosives are fired at a target, spotters check the area. If a pronghorn is seen within 3 miles of a target, the mission is stopped.

The office is run by Jim Uken, a former fighter pilot who was initially ambivalent about the job. "I spent most of my career in a cockpit," he said. "I wondered what I was getting into."

But Uken, 57, already knew how seriously the Air Force took these orders.

During the Gulf War, he flew an F-4 Phantom on what were called "wild weasel" missions to suppress anti-aircraft missiles.

"You would get your daily orders. They were your rules, your dos and don'ts," Uken said. "Some targets were just off-limits, even in a reactionary mode. There were culturally significant places you could not hit."



(c) W. C. "Bill" Porter 1999



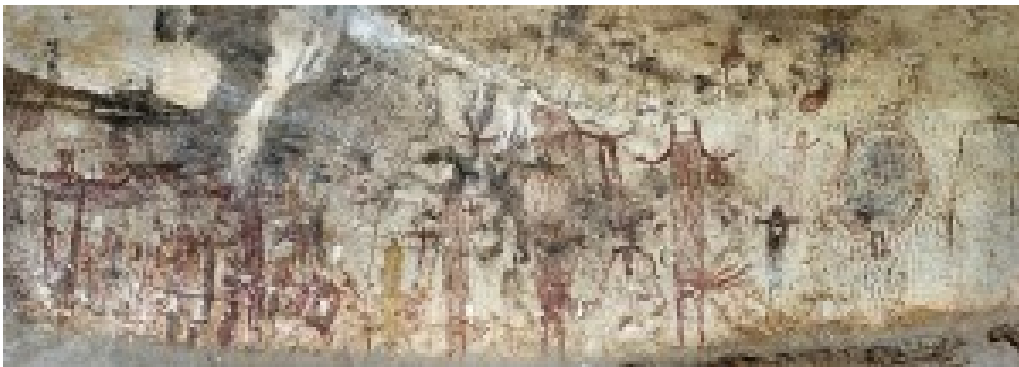
At Goldwater Range, nearly 94 percent of the land is protected.

“We closed some targets when we decided the value of the archaeological site superseded the value of the target,” said Uken, a retired colonel now working as a civilian.

Another important factor for preservation is the fact that the military’s presence has prevented farming, mining and grazing.

One of Uken’s favorite parts of the preservation effort is when a representative of the Tohono O’odham Nation talks to pilots-in-training and their instructors.

“These are very patriotic people,” Uken said of the Tohono O’odhams. “Many of them have served. They understand the importance of military preparedness. They also know why the land matters.”



“The pilots, they listen and they ask a lot of questions about how it was and where these people came from. They want to know what makes it sacred,” said Joe Joaquin, a cultural affairs officer for the Tohono O’odham Nation.

Joaquin, 76, was born and raised on the reservation. He was 8 years old when the range was created and planes started flying over his home, in an area called Big Fields, near Sells.

He was still a teenager when he joined the Marines. He served 20 years, fighting in both Korea and Vietnam.

Now, every couple of months he goes to Luke Air Force Base to talk to visiting pilots in a program called “Face to the Nation.”

He sometimes invites the instructors to go to the range with him.

“We get them to walk on the earth,” Joaquin said, sitting in an office near the tribal headquarters in the town of Sells. “They see it from so high and so fast, but down on the earth you see things.”





• [Share / Save](#) ↕

Posted in [Cultural Resource Management](#) | Tags: [Cultural Resource Management](#), [desert Archaeology](#), [petroglyphs](#), [Tohono O'odham Nation](#) | [No Comments](#) »

## REPORTS ARE COMING IN...

June 22nd, 2009 | Author: [thomascosgrove](#)

Arizona UFO Activity Spikes

**UFO Chased by Fighter Jets Over Havasu**

***Phoenix Lights Return!***

***Phoenix Lights Return Again!***

***Phoenix Streetlights Trigger Panic, Hoarding, Cannibalism!***

Some AZ Sightings Coverage Triggers Reflux!

I have also noticed a spike in the reports from Arizona for the past 20 months. By many credible and understandably excited and wondering folks.

“Whoa. What WAS that?!!” are questions that seem to be growing hereabouts. That’s great, as far as I’m concerned. Indeed, most reports I’ve read are as objective and factual as the reporter could be. Most reporters (lay folk, not journalists) try to separate their feelings from observations. This, too, is greatly appreciated.

**People are paying attention, and are not reluctant to report.**

But I really get tired of the “grabber” headlines and hyperbole. This has dogged us since Kenneth Arnold made the first current era UFO report in 1947, just prior to the legendary Roswell incident.

What he clearly reported was a fast, intermittently moving, orderly group of flying wing-shaped objects. At a loss for words to describe this unusual aerial motion, he stated that the objects moved “in a skipping fashion, like a saucer skipping over water”. Someone grabbed the saucer reference and ran with it, even though it had nothing to do with the objects’ shapes.

Lois Lane to Jimmy Olson:

“Remember, Jimmy. You have an instant to grab the readers’ attention. Real Reporters call that instant ‘The Headline’”.

“Gee, whiz, Miss Lane. I’m on it!”.

Since then, many others have reported similar odd, shifting or skipping flight of some UFOs. A Trekkie would say “phasing in and out “. I really can not find much material on these types of observations, but it seems to be a recurring element of the phenomena.

There is no credible reference to a “saucer” crash at Roswell, as there were no witnesses we know of. Only strange debris from some kind of manufactured craft. No public information exists as to the object’s original shape. Only materials. But by then, the Arnold sighting and mislabeling had set in.



Kenneth Arnold with artist's depiction

(don' look like no steenkin' saucer)

Sharon, I too could not help but connect some recent sighting events with an increase of "readiness" from our Armed Forces. Testing and training are SO centered here in the Southwest..

The object recovery reports from Needles seems to point in this direction (pun intended). But was River Bob firebombed?

And Bob (not River Bob), your breakdown of the EBX High Altitude Balloon flight and its "viewing window" over AZ & NM is spot on. Sure. That could very well have accounted for those reports. Thanks for looking up the details of altitude, flight path, time of day, etc. Or did you already know this? And would this test platform possibly look totally **unlike** a recreational hot air balloon?



*The X45c. An Unmanned Combat Arial Vehicle (UCAV)*

*It's brethren are either in tests, or actual deployment*

*Numbers unknown*

And I'm glad that folks are paying attention enough to ask the questions.

Yet, I believe that there might be more to some of these sightings than their uninvestigated whole might imply.

Sure, most can be quietly accounted for.

I could state again that ANY three points of light in the night sky form a triangle.

From any viewpoint, except when observed as a straight line.

For **at least** as long as it takes for a person or webcam to see it.



“tear in he clouds” over Louisiana, 2008

Sure, it's a weather event. But what caused that?

Conversely, I could take that image, copyright it, **sell it**, even, using gripping jargon like

” The single most import series of REAL photos of ALLEGED UFOs EVER” while hoping that someone might never question the use of the words “real, alleged, unidentified” in the same breath.

But I wouldn't.



*Humming UAV*

*(not a Caret Drone)*



Seamos

(Rotors virtually invisible when operating)

But I do take seriously reports from three adjacent police departments regarding a ground chase of a “Triangle-shaped, silent, huge craft” that cruised those same towns’ skies...

My own best recent experience was just like the above, but I was able to whittle it down to a rare B2 Bomber nighttime flyover. At very low altitude. Tiny little running lights were the tipoff, and the almost inaudible engines. Those special engines by GE are quiet, and sound very distinctive.

But it was WAY cooler to me when it was “unidentified”.

Others defy explanation.



Tucson, AZ 3/09

(taken by Cym, this view is to the NE. Not a wind effect, as the winds

That day were from the NNW)



*Submitted by Virgil and Mike. 35mm film.*

Anomalous object noticed after development. Yes, the lens was clean.

Object above the Sun Dog is not a lens flare, either.



*Also submitted by Virgil& Mike*

Some local, recent sightings s above seem to be more biological than mechanical in nature. I've heard some good arguments for the theory of unknown aerial life forms... then again, does that amoeba/jellyfish appearance come from a type of light-bending camo? We have this ability now, why wouldn't "They"? Or is "They" Us?

Some objects filmed or sighted may never be explained. Beyond this, **events** in our lives may defy description. Some things will always be unknowable.

I also have no answers for my neighbors, though, who have seen their reasonably happy lives disrupted by a series of abductions spanning years. With not even their children safe from these terrifying, unknown, repeated events, even their basic rights to security and liberty have been stripped away. All I can do is listen, talk with them, offer them others to contact who might know this phenomena better. Beyond my ken, but it's there with them nonetheless. They're showing some amazing fortitude in all this, and can even joke about "It", but they'd clearly rather not have this in their lives.

•

[Share / Save](#) ▾

Posted in [Uncategorized](#) | Tags: [Arizona sightings](#), [Kenneth Arnold](#), [observer reporting](#), [UAV](#), [UCAVs](#), [UFO sightings](#) | [1 Comment](#) »

## Out Of Place, Out Of Time, Off the Scale

May 27th, 2009 | Author: [thomascosgrove](#)

There I was,  
There I was,  
There I was,  
~~In the Congo...~~

No, actually somewhere near Mexico, walking across a dry alkaline lake bed that hadn't even approached the word "lake" in some hundreds of years. Even after the Monsoon, the wettest this place can do is to transform into a small sea of grayish muck, clinging to everything, trying to have you join it in eternal muckdom. Or is it " consummate muckiness"?

Once dry, however, it is a sea of hard plaster, screed flat by wind and gravity.

To my left, Lot's wife. Still a pillar of the community, I see.

To my right, Lot's abandoned 4×4, half muck-sucked in, and doing a sort of freeze-frame La Brea Tar Pit thing.

You can imagine it screaming as little Suzukis tear at its quarter panels.

A half mile past that, nothing but view. And nothing in view, except blue sky above, grey dried mud below, and the cool mountains in the distance.

As much as I love the forests, particularly those of the ancient Appalachians, I also love the desert.

Space, light, distance, focus. Unlike any other wild place on earth. The Sonoran Desert is rich with life, diverse and eclectic, most of its animals hidden. Somewhere not far from here, the last remaining Sonoran Pronghorn are probably keeping tabs on me.

The flats are barren, boring to some. But the sense of scale one gets is truly unique, especially in bright daylight. With so little around to break the horizon, or call the eye, one can get a feeling of being overwhelmed by the vastness, tiny in this huge harsh land.

I find myself looking for "galloping stones", as this would be a great place for them to gambol about. Or do the Electric Slide (hey, that's what they DO).

But they tend to favor the Mojave.

Other times, one can feel expansive, somewhat bigger than life, as the miles pass underneath your feet and that horizon gets perceptively closer. "Fastwalking" the Navajo call it. Although that comparison is weak.

It's more like something Dr. Manhattan would feel when he does the giant blue body thing.

A raven may be the only life you see, flying over to see why you might be here.

The usual comment : "Roark".

The polite response: "Roark".

That's usually enough for ravens, but they're cool enough to acknowledge your presence.

With the scale so grand about you, but at a distance, it seems the mind is compelled to look for and focus upon, any little, close object or anomaly in this otherwise flat, bright Kafkaesque limbo.

And there, away off over there, it was.

As I got closer, it took a familiar form. And the questions began...





I thought about out-of-place-artifacts. Yup. Certainly. But Who, When, Why?

The style was familiar, but I couldn't place it. Anasazi? Hohokam? Archaic? And how about the placement? Looks like it had been exposed to maybe a dozen rains, not the thousands it would have endured if it had been left some time longer ago. It certainly looked melted into the hard pan of the lakebed.

I was reminded of the hoard of Roman coins that was unearthed in Tucson some decades ago. Genuine Roman mint, coined in the year 500 A.D. or so. Found by locals during construction.

May have been a hoax, *but how was it explained that the coins were recovered in soil strata that corresponded to the time of their minting?*

That cube of alloyed metal, near perfect in its dimensions, of unknown composition, that was found in a seam of Cornwall coal 30 million years old.

The recently discovered wristwatch in a Chinese tomb, 200 years out of place.



Maybe it was left behind by some trading visitors long ago. Even then there was trade between those here in Tuc-Son ("beneath the Black Mountain"), the Aztecs, and the people of what is now California.

This one could be explained a bit easier. Maybe, some pot hunter left it here recently, after taking it from its original resting place. As an Archaeology student, I find looting to be a crime against heritage and culture. Abhorrent.

I decide to leave it place. As out-of-place as it is, I'd only add to it.

Still does not explain it being on top of the drimuck, instead of a few feet down.  
Hmmm...

As I was still in a pondering mindset, I began to wonder again about our sense of scale, and how we often assume that all is scaled to our limited mindset. All of History is abstract, but one lifetime is the yardstick. Ours.

Time is measured by how much we've got under the belt, and how much might be left. To us.

Distances are meaningless beyond that which we commonly experience.

A twenty-three mile commute is either a drag or a dream, but 23 billion light years just does not enter the discussion.

We seem to ignore the microscopic, or simply forget to remember that nano-tech, of a natural sort, begins and maintains life itself.

Kinda makes us sound parochial, huh?

Hynek called it "Temporal Provincialism".

Such is the human condition.

As I took photos, I heard a noise, like scraping, from inside the pot. Looking in, it was made by something long, green, and alive.

No bout a doubt it.



Its head resembled something fierce, with weird, horizontal jaws. I was not about to stick my hand or anything else in there. I respect any animal, and I LOVE my limbs and digits still attached, thank you.

Taken aback (two steps back), the first thing to come to mind was the Mongolian Death Worm.

But aren't they supposed to be red? The climate was right, but the continent, wrong. But there it was, coiled in that pot like a snake charmer's cobra in its basket.

And I knew that there ain't no field guide gonna help me now.

Thinking along paranormal lines, I reminded myself that "nuts and bolts" solutions are rare when confronted by the raw unknown of anomalies. Especially when the item at hand seems to have an element of deliberate existence.

Sometimes, as in the entire field of ufology, we're dealing with an intelligence that may or may not comply with our preconceptions, expectations, and provincial behavior.

That's OUR problem. Especially in efforts to communicate with the "other".

Even a purely physical interaction could be communication (i.e. I broke the pot to see the creature. The creature was made to feel unsafe, and face-hugged me).

But, especially through language, people expect an exchange of concepts. Abstracted out, so we don't have to convey ideas like very bad mimes (I still can't do the "Man-in-Box").

Clear communication is best when between two intelligent entities who think alike, have shared concepts, and have a middle-ground medium with which to exchange them.

I'm hoping that the entities we have had some interactions with (ETs or Extra Dimensionals)

Are at least similar enough to us to find this common medium. Some telepathic exchanges, as reported by abductees and experiencers, go both ways, good and bad. Very good and Very bad, it seems.

It is quite possible that there will be contact with entities that have almost no common ground with us at all. No shared views or concepts whatsoever. **The Truly Alien**. At that point, mutual avoidance might be the best course of action. Let's hope we do not compete for resources.

As for the artifact and the possible face-hugger?



My mystery was only a question of scale. \*

Mutual avoidance seemed best.

\*No Potter Wasps were injured by this article, but the inchworm inside is PISSED about being used as baby food.

• [Share / Save](#)

Posted in [Uncategorized](#) | Tags: [cultural filters](#), [interspecies communication](#), [muck](#), [perceptions](#), [pottery](#), [the alien](#) | [1 Comment](#) »

## CHUCKLES AND AWE

April 21st, 2009 | Author: [thomascosgrove](#)



### *How Aliens Avoid Detection*

*By Faye Passow*

[www.keepthefaye.com](http://www.keepthefaye.com)

Yeah, I think it's funny, too. The coolest thing about this type of event is that it's not the weirdest UFO sighting or encounter I've read about. Seemingly absurd, even comic accounts of human encounters with the unexplained are peppered throughout the UFO literature.

My favorites include the man who witnessed an unusual craft land, opening up to reveal three occupants, controls, and a stove. He was given hotcakes. They were analyzed later and found to be normal, but lacking in salt. How do you relate this information, and report the encounter, and keep a straight face? Never mind hearing about it. Haw, Haw, Haw!

"Yeah, and after that we had breakfast".

Bust my gut.

*But, what a great way to ensure that your presence will never be widely accepted, and never examined with all the resources available.*

Researchers like Jacques Vallee have taken encounters like that above and connected them to themes of interactions most commonly found in legends and fairy tales.

Archetypal parallels, the events updated with high-tech vehicles and alien appearances, but still interactions between us and the Fey World of myth. This theory is worth more examination.



The Extra-Terrestrial Hypothesis (ETH) that holds UFOs as visitors or unmanned craft from other star systems, still has plenty of merit, in my opinion. Given the age of the universe, the numbers of potentially life-sustaining planets, and the fact that we're noisy neighbors, odds are that somebody or some thing is gonna drop by to see what the ruckus is about.

The Extra-Dimensional Hypothesis (EDH) also has merit. As the Multiverse Theory slowly gains widespread ratification, and the population at large slowly grasps its implications, the idea of visitors from "other realities" doesn't seem so outrageous. Especially when considered in light of "High Strangeness events". Having UFO events, Bigfoot sightings, Giant bird sightings, bird-men sightings, and other paranormal incidents **in the same places at the same time** really does challenge us to expand our point of view.

The Psycho-Social Hypothesis (PSH) stresses the fact that what we perceive and believe are as much a product of our minds and culture as what "might really be there". There are spiritual aspects of the phenomena, usually related to the observer/participant interpretation of the perceived. There are also biological aspects, as our senses are not perfect and lead to many illusions of experience. The mind itself is notoriously easy to deceive, as we constantly misperceive, misjudge and erroneously fill in missing spaces and gaps with our preferences.

Or nightmares. All too often, even without our awareness, our minds create images, memories, and "facts" that simply are not reflected in reality.

Sometimes, we get lost in fantasy, forcing it upon our world view. Usually, it's harmless. Sometimes not.

"I turned to listen to the speaker, a channeler who was busily telling us how the spiritual SWAT team from the Sagittarius galaxy was coming to make our lives wonderful, and do everything short of showing us how to simplify the tax code while cutting the deficit. I looked at all the people smiling and nodding around me, rapt with knowledge that a better day was coming, and envied them their conviction. But then, contentment only comes to those who stop questioning, and that's not a price I'm willing to pay."

-Bufo Calvin, 1997

I have to agree. But if we DO get visitors from that direction, let's hope they're from Sagittarius A\*. That'd be most cool, indeed.

Even the best theories remain just that without empirical proof. We may hold to our favorite beliefs with fanaticism, but the presentation of factual evidence should sway most reasonable people. One way or the other. Without facts to guide the process, we are free to develop and discuss the various theories that arise to help us understand all paranormal events. But speculation can carry us only so far. To have real answers to these very real questions, **credible research must be conducted, and verified**. In a

civil discourse, with facts as base to debates, the best theories will rise to the top. Others will fall away. Events may occur that reverse previous thinking. Research is ongoing. Call me a dreamer...

Meanwhile, enjoy the show! And keep questioning. Nobody is holding a gun to my head, so I'll suspend my belief in any theory until it is well on the way to fact. And I'll try not to be too quick to discount, either.

To paraphrase Arthur C. Clark (PBUH):

"Learning and Loving are the two most important things in life".

We live in an awesome, shocking and sometimes funny Multiverse. Let's find out more about it.

(Sagittarius A\* is the designation for the black hole at our galaxy's center)

• [Share / Save](#)

Posted in [Uncategorized](#) | Tags: [absurdity in ufo research](#), [perceptions paranormal](#), [UAP](#), [UFOs](#) | [No Comments](#) »

## **NOT your Grandmas' Revival Camps...**

March 7th, 2009 | Author: [thomascosgrove](#)



In recent weeks, I've heard State officials from California to Texas commenting on the increasing anarchy in Mexico. When asked about the growing "blow-over" of murder and mayhem to our side of the border, the answer has been "We're dealing with it, and we've got the facilities to deal with further incursions".

Oddly enough, other officials, including Homeland Security, will simply state that they "are reviewing and revising plans that are in development".

***Really? What have you got so far?***

SAN FRANCISCO (MarketWatch) – 1/24/06

**KBR**, the engineering and construction subsidiary of **Halliburton Co.** [HAL](#), said Tuesday it has been awarded a contingency contract from the Department of Homeland Security to support its Immigration and Customs Enforcement facilities in the event of an emergency. The maximum total value of the contract is \$385 million and consists of a 1-year base period with four 1-year options. KBR held the previous ICE contract from 2000 through 2005. The contract, which is effective immediately, provides for establishing temporary detention and processing capabilities to expand existing ICE Detention and Removal Operations Program facilities in the event of an emergency influx of immigrants into the U.S., **or to support the rapid development of new programs**, KBR said. The contract may also provide migrant detention support to other government organizations in the event of an immigration emergency, as well as the development of a plan to react to a national emergency, such as a natural disaster, the company said.

Yes, the same KBR/Haliburton so loved by our former Vice President, Dick Cheney(Criminal charges pending).

***Oh, that's how it works, eh? Someone's been very busy lately.***

***What might those "new programs" be?***

There are over 800 prison camps in the United States, all fully operational and ready to receive prisoners. They are all staffed and guarded, but they are virtually empty. These camps are operated by FEMA (Federal Emergency Management Agency), and should Martial Law need to be implemented in the United States all it would take is a presidential signature on a proclamation and the attorney general's signature on a warrant to which a list of names is attached.

The Rex 84 Program was established on the reasoning that if a "mass exodus" of illegal aliens crossed the Mexican/US border, they would be quickly rounded up and detained in detention centers by FEMA. Rex 84 allowed many military bases to be closed down and to be turned into prisons.

Operation Cable Splicer and Garden Plot are the two sub programs which will be implemented once the Rex 84 program is initiated for its proper purpose. Garden Plot is the program to control the population. Cable Splicer is the program for an orderly takeover of the state and local governments by the federal government. FEMA is the executive arm of the coming police state and thus will head up all operations. The Presidential Executive Orders already listed on the Federal Register also are part of the legal framework for this operation.

Project "Endgame" ties all the loose ends together (who comes up with this shit?). The camps all have railroad facilities as well as roads leading to and from the detention facilities. Many also have an airport nearby. The majority of the camps can house a population of 20,000 prisoners. Currently, the largest of these facilities is just outside of Fairbanks, Alaska. The Alaskan facility is a massive "mental health facility" and can reputedly hold approximately 2 million people.

*(To find a detention camp near YOU, press the "FEMA Camp Locations" button, above)*

### ***What about the Constitution? The Bill of Rights?***

Executive Orders associated with FEMA that would suspend the Constitution and the Bill of Rights.

These Executive Orders have been on record for nearly 30 years and could be enacted by the stroke of a Presidential pen:

#### **EXECUTIVE ORDER 10990**

allows the government to take over all modes of transportation and control of highways and seaports.

#### **EXECUTIVE ORDER 10995**

allows the government to seize and control the communication media.

#### **EXECUTIVE ORDER 10997**

allows the government to take over all electrical power, gas, petroleum, fuels and minerals.

#### **EXECUTIVE ORDER 10998**

allows the government to seize all means of transportation, including personal cars, trucks or vehicles of any kind and total control over all highways, seaports, and waterways.

#### **EXECUTIVE ORDER 10999**

allows the government to take over all food resources and farms.

#### **EXECUTIVE ORDER 11000**

allows the government to mobilize civilians into work brigades under government supervision.

#### **EXECUTIVE ORDER 11001**

allows the government to take over all health, education and welfare functions.

#### **EXECUTIVE ORDER 11002**

designates the Postmaster General to operate a national registration of all persons.

**EXECUTIVE ORDER 11003** allows the government to take over all airports and aircraft,

including commercial aircraft.

EXECUTIVE ORDER 11004 allows the Housing and Finance Authority to relocate communities, build new housing with public funds, designate areas to be abandoned, and establish new locations for populations.

EXECUTIVE ORDER 11005

allows the government to take over railroads, inland waterways and public storage facilities.

EXECUTIVE ORDER 11051

specifies the responsibility of the Office of Emergency Planning and gives authorization to put all Executive Orders into effect in times of increased international tensions and economic or financial crisis.

EXECUTIVE ORDER 11310

grants authority to the Department of Justice to enforce the plans set out in Executive Orders, to institute industrial support, to establish judicial and legislative liaison, to control all aliens, to operate penal and correctional institutions, and to advise and assist the President.

EXECUTIVE ORDER 11049

assigns emergency preparedness function to federal departments and agencies, consolidating 21 operative Executive Orders issued over a fifteen year period.

EXECUTIVE ORDER 11921

allows the Federal Emergency Preparedness Agency to develop plans to establish control over the mechanisms of production and distribution, of energy sources, wages, salaries, credit and the flow of money in U.S. financial institution in any undefined national emergency. It also provides that when a state of emergency is declared by the President, Congress cannot review the action for six months. The Federal Emergency Management Agency has broad powers in every aspect of the nation. General Frank Salzedo, chief of FEMA's Civil Security Division stated in a 1983 conference that he saw FEMA's role as a "new frontier in the protection of individual and governmental leaders from assassination, and of civil and military installations from sabotage and/or attack, as well as prevention of dissident groups from gaining access to U.S. opinion, or a global audience in times of crisis." FEMA's powers were consolidated by President Carter to incorporate the...

National Security Act of 1947

allows for the strategic relocation of industries, services, government and other essential economic activities, and to rationalize the requirements for manpower, resources and production facilities.

1950 Defense Production Act

gives the President sweeping powers over all aspects of the economy.

Act of August 29, 1916

authorizes the Secretary of the Army, in time of war, to take possession of any transportation system for transporting troops, material, or any other purpose related to the emergency.

International Emergency Economic Powers Act

enables the President to seize the property of a foreign country or national.



- These powers were transferred to FEMA in a sweeping consolidation in 1979.
- Most of the camps have been constructed or renovated within the past few years.

-Hurricane Katrina, preparation and aftermath, was called an “exercise” by our then Vice President. A shameful loss and shuffling of citizens.

Hmmmm. So we have an identified plan, the “legal structures” in place to allow it to bear fruit, a growing number of discretely-constructed new “detainment facilities” that could conceivably hold MILLIONS of people.

We also have a growing border problem as things get worse in Mexico. This is certainly due to our border still being OPEN to illegal traffic of all kinds.

Why would our Government build all these camps to accommodate a “massive influx of refugees “when the border is left open?

Instead of preparing for a “massive influx”, why not devote some time and energy to filtering out undesirables, and allow good folks to seek refuge and that better life we used to be proud to offer?

***Hey, what were those “Other Programs” again?***

***Could there be several agendas being worked here?***

Yes. There is always the possibility that “Programs” are funded, developed and implemented with outcomes totally different than the stated purpose.

However, let’s remember that to think that there is a conspiracy and dark agenda behind this assumes a certain level of intelligence within the conspirators.

A level of intelligence they might not deserve.

-To think that these things came to pass as a result of greed, favoritism, manipulation, avarice, hubris and incompetence is just as likely.

**And I truly don’t know which scenario scares me more.**

Special thanks to:

Grey Ghost of Thothweb (<http://www.thothweb.com/>),

Phantoms and Monsters <http://naturalplane.blogspot.com/> and

PrisonPlanet ([www.prisonplanet.com](http://www.prisonplanet.com))



Posted in [FEMA](#), [US Government](#) | Tags: [border issues](#), [citizen detention](#), [civil rights](#), [FEMA](#), [U.S. detention facilities](#), [U.S. internment camps](#), [U.S./Mexico](#) | [1 Comment »](#)

## La Dama de Azul

February 13th, 2009 | Author: [thomascosgrove](#)



Here's a cool tale I became aware of just a few years ago.

When Missionaries first arrived in this area from New Spain (Mexico) they set about to convert the locals in the usual ways, sometimes quite heavy-handedly. The reaction to this was succinctly put by the Elders of southern Arizona tribes.

"The Lady in Blue has already told us about this Jesus, and she is why we have sought you out to know him better, and be baptized, as she instructed. It does not seem to us that their ways are yours. You beat us to believe,

when we already do. Lighten up."

They did, and continued East, only after establishing missions along their route. Kino and company were clueless about "La Dama De Azul" until they reached the New Mexico/Texas region, where virtually every tribe they met told of the Blue Lady and her appearances to them, preaching and healing, always disappearing into the air when done with the task at hand, but returning frequently. Farther to the East, around 1639, fifty members of the Jumano Indian tribe came to Mission Corpus Christi de la Isleta south of El Paso and asked for instructions in the Catholic faith.

When the astonished padres asked the Indians what motivated them to come to Isleta, they said their people living in East Texas had been visited by a beautiful lady who always wore a blue habit and taught them religion in their own language. The lady in blue, they said, urged them to search out missionaries to hear the word of God and be baptized.

At the time, Isleta and another mission, Nuestra Senora de Socorro, were originally in Mexico, but a change in the course of the Rio Grande River placed them on Texas soil.

Through his work, Father Alfonso de Benavides learned that Mother Maria de Jesus de Agreda, a cloistered abbess who lived in Spain, was the lady in blue.

A Catholic nun of Jewish descent, Sor María de Jesus of Agreda authored Mystical City of God, an 8-book narrative of her direct revelations from Mary, mother of Jesus. Commanded to burn her writings because “surely God would not chose a woman for such an important work,” María, a controversial 48-year old cloistered abbess, was seized in 1650 from her sick bed and carried to the feet of a Spanish Inquisitor. Although ultimately acquitted, the interrogation covered her mystical experiences and missionary work in the American Southwest, events corroborated by witnesses in Spain and as far as Texas, New Mexico and Arizona, where she is honored yet today as the legendary missionary known as the Lady in Blue.

Often consulted by King Phillip IV, Mother Maria said she visited the new world in a manner known as bi-location, a phenomena that allows one individual to appear personally in two places at the same time.

Maria de Agreda had always wished to come to the New World as a missionary, but her vows in Spain prevented her. While praying for the welfare of the Indians, she often fell into a trance and was taken by God, without her awareness, to a different place where Indians lived. She said she saw the Indians, heard them speak and felt the difference in the climate of the land. All told there were more than five hundred visits by her to the Native Americans of over thirty tribes.

After a life of service, both mundane and sublime, she passed away in Agreda, Spain, never having corporally visited the New World.

The last reported appearance of the lady in blue was in the 1840s when a mysterious young woman wearing a long blue dress came into the homes of families stricken by a “black tongue” epidemic at old Sabinetown on the Sabine River.

She remained in the community for days, brewing a tea from forest herbs, tending to the ill, weeping over the dead, and never sleeping. When the epidemic ran its course, she disappeared as mysteriously as she appeared.

Although it is uncommon, bilocation is an ancient phenomenon. It is claimed to have been experienced, and even practiced by will, by mystics, ecstasies, saints, monks, holy persons, and magical adepts. Several Christian saints and monks were adept at bilocation such as St. Anthony of Padua, St. Ambrose of Milan, St. Severus of Ravenna, and Padre Pio of Italy. In 1774, St. Alphonsus Maria de'Ligouri was seen at the bedside of the dying Pope Clement XIV, when in fact the saint was confined to his cell in a location that was a four-day journey away.

A pioneer psychical researcher, Frederic W. H. Myers, one of the founders of the Society for Psychical Research in England, along with others collected and studied reports of bilocation, however the phenomenon has received little interest in modern times.

• [Share / Save](#) ↕

Posted in [bilocation](#), [mysticism](#), [paranormal](#) | Tags: [bilocation](#), [legends](#), [mysticism](#), [paranormal](#), [southwest](#) | [No Comments](#) »

## THUNDERBIRDS

February 8th, 2009 | Author: [thomascosgrove](#)

“We are not realists. We are not idealists. We are intermediatists—that nothing is real, but that nothing is unreal.” Charles H. Fort

### THUNDERBIRDS



(pictograph at Black Dragon Canyon, Utah)

Imagine: huge birds, large enough to attack adults and carry off children... riding the arcs of storms, thunder and lightening flashing menacingly. It seems as though every Native American tribe has stories featuring these legendary creatures-and gargantuan birds haunt legends the world over.

In Arabia, it is known as the *Roc*. In Malaysia, the *Garuda*. In Papua New Guinea, they are called *Ropen*. In China, they call them *Peng*. Here in the United States, the feathered menace is known as the *Piasa*, or Thunderbird.

The archaeological record will attest to the massive winged creatures, which once thrived about our primordial world. The Pterosaurs-reptiles-lived during the Mesozoic Era (248-65 million years ago), and were the first vertebrates to evolve the power of flight. The largest had wingspans of over 40 feet!

More recently, true “giant” birds, the Tetratorns, soared above the mastodons and giant sloths of North and South America. With wingspans of up to 25 feet, their fossils abound in the northwestern corner of Arizona. They are thought to have gone extinct a mere 8,000 years ago. Or did they? Arizona’s Papago, Pima, and Cochiti people have their tales of giant birds, and in the Sonora region of Mexico and the southwestern U.S. live the Yaqui people. They, too, tell of encounters with Thunderbirds.

- On July 25, 1977, ten-year-old Marlon Lowe, of Lawndale, Illinois, was playing in his backyard when two large birds appeared. One bird descended upon the boy and tried to carry him off, and had him airborne for a time. His mother, seeing this from the kitchen window, gave chase, screaming. The bird could barely “lift off” with the boy, and dropped him after a hundred-yard chase. Both Marlon and his mother describe a dark bird with a naked head and a wingspan of 15 to 20 feet.
- In 2002, in Dillingham and Manokotak, Alaska, pilots and townsfolk observed large flying creatures with 14-foot wingspans. These were described as reptilian, with membrane wings and crested heads.
- In May of 2008, numerous reports of Pterodactyl-like creatures with wingspans of up to 18 feet were reported in Washington County, Pennsylvania.

So many of the world’s legends talk of massive birds sharing the earth with us-and indeed, American Teratorn bones have almost always been found “in conjunction with human habitation sites.”

It’s just plain startling to see a massive, unknown (or unclassifiable) bird in flight. It’s downright bizarre to contemplate the idea that the progeny of an Ice Age flock could still inhabit the planet. But is it more bizarre than the steel workers who saw flying reptiles over modern-day Pennsylvania, or the “Man-Birds” being reported in the lands of the mythical Thunderbird?

Are these archetypal images of our racial memory, as Carl Jung might have interpreted them? Or are these as-yet unclassified creatures, as cryptozoologists might imagine them?

Or are they phenomena that Fort would ponder over and report upon, patiently awaiting the next “impossible” airborne creature?



Go to [binallofamerica.com/index.html](http://binallofamerica.com/index.html) for Tim’s interview with Ken Gerhard,

A great discussion of all things Thunderbird, Texas Big Bird, and Cryptozoological!



Posted in [cryptozoology](#) | Tags: [Garuda](#), [Piasa](#), [pterosaurs](#), [Ropen](#), [teratorns](#), [Thunderbirds](#) | [1 Comment »](#)

## Unidentified Aerial Phenomena

February 5th, 2009 | Author: [thomascosgrove](#)

Between 9/30/1946 and 1/9/09, there have been 1,853 documented sightings of UFOs / UAPs in Arizona (thanks, National UFO Reporting Center!

-The actual number could be closer to 6,500 as a majority of witnesses are reluctant to formally report their experiences for fear of ridicule or other unwanted attention.

Understandable.

Who wants to be snickered at by Barbie and Ken on the six O'Clock news?

Others **do not** hesitate to report the anomalous... and I find them admirable.

Cym at Natural Nomad <http://natural-nomad.blogspot.com/> had an interesting view of the Catalinas on 1/10/09. Seems she caught an image of something anomalous lingering near Mt Lemmon Observatory. My first impression had it looking like a digital artifact. Second look in hi res had me wondering... and hooked.

Visit her site for images and info on what it could NOT be.





If Charles H. Fort were to hear of this he might remark:

***“It appeared to some to be a great Beetle clasping the ridge with legs or strangely formed pedipalps, wings in their chitinous covers.***

***Was it simply resting a bit, on its way back to the aether?***

***Or was it FEEDING?”.***

‘Till next time, friends.

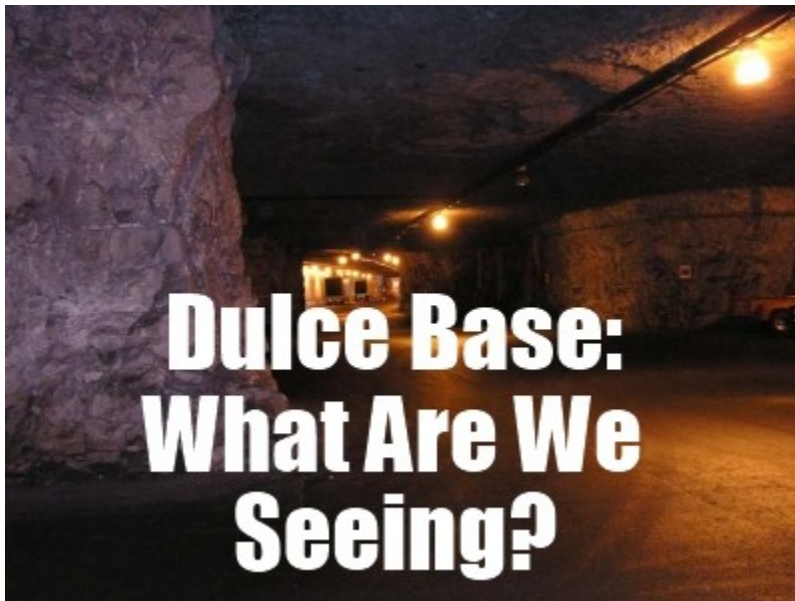
• [Share / Save](#)

Posted in [Fortean](#), [UFO](#) | Tags: [Add new tag](#), [Arizona](#), [Catalinas](#), [Fortean](#), [Mt. Lemmon Observatory](#), [sightings](#), [UFO](#) | [1 Comment](#) »

<http://forteanswest.com/wordpress-mu/arizonalowfi/page/2/>

**Monday, August 08, 2011**

## **Dulce Base: What Are We Seeing?**



During the past several months, I have accorded some attention to several unexplained livestock attacks and cryptid sightings on the Dine Navajo lands in the Four Corners region...in particular, those areas in northwest New Mexico. Many of these attacks were, most likely, the result of Bigfoot-type hominids that are regularly seen in this area. Other attacks have a more bizarre angle, especially when the tracks of the perpetrator are of an unfamiliar genus and / or suddenly end in mid-stride as well as animal carcasses drained of blood and not fed upon.

The Archuleta Mesa area near Dulce, New Mexico has long been rumored to hold a joint government-alien biogenetic laboratory designed to carry out bizarre experiments on humans and animals. It has also been said that the lower levels of this underground system stretches between Dulce and Los Alamos some 90 miles to the south-east. Because of the proximity of these facilities to the Dine Navajo lands, is it possible that these attacks are of unknown experimental beings that have either escaped from the facility or have been released in order to be scientifically monitored?

It may seem to be a far-fetched hypothesis...unless, of course, you are the victim

of the attacks and have no idea of what you're dealing with. The following narratives may temper your resolve or offer some curiosity to the question.

**In March 2011 I received the following email:**

*Lon, I read the letter you posted recently about the Dulce Labs genetics experiments and wanted to share my experiences with your readers. When I was an undergraduate studying genetics in the mid-1970s, I did a 10-month internship at Dulce Labs. My primary duties were on level 1, that is where I spent almost all of my time. But once a week I accompanied one of the junior researchers to levels 5, 6, and 7 to collect data tapes and other documentation. I never got past the "clear zone" on those levels, but on a couple occasions I heard inhuman shrieks and wailing noises on level 6. I was told that level 6 was a psychiatric facility for especially disturbed patients, and that they were known to have emotional outbursts.*

*On one occasion while we were waiting for someone to bring out the tapes, I heard part of a message come through the intercom, and the words are burned into my memory.*

**VOICE 1: "CELL 34 COMPROMISED, ENTITY HAS BREACHED CONTAINMENT"**

*After a pause a second voice came over the speaker:*

**VOICE 2: "AVAILABLE PERSONAL REPORT TO THE BLUE ZONE FOR C&C. MAXIMUM FORCE AUTHORIZED."**

*The guard at the desk told me and my colleague that we had to leave immediately, we were rushed back into the elevator before the materials were delivered to us. It was two days before they let us go pick up the tapes, and when we went that time, everything was normal. Nobody ever talked about it. I tried to ask my colleague, the junior researcher who was there at the time, about it, but he said he didn't know what I was talking about, and something in his tone told me I'd better forget about it too.*

*After I graduated I was interested in returning to Dulce because I was really excited about the potential for genetic science, and Dulce had some very advanced equipment and knowledge - better than anything being used anywhere else. But I was told that there weren't any openings. I wondered if I was being blown off because of my curiosity about that event, if I was considered a risk. I tried contacting the junior researcher, but never got a response from him. - MP*

**The above anecdote was in response to this posted email:**

Sir, first off, if you want the full story let me know. But this will explain how Mothman came about. U.S. Energy Secretary John Herrington named the Lawrence Berkeley Laboratory and New Mexico's Los Alamos National Laboratory to house advanced genetic research centers as part of a project to decipher the human genome. The genome holds the genetically coded instructions that guide the transformation of a single cell, a fertilized egg, into a biological organism.

*"The Human Genome Project may well have the greatest direct impact on humanity of any scientific initiative before us today", said David Shirley, Director of the Berkeley Laboratory. Covertly, this research has been going on for years at the Dulce bio-genetics labs. Level 6 is hauntingly known by employees as "Nightmare Hall". It holds the genetic labs at Dulce. Reports from workers who have seen bizarre experimentation, are as follows:*

*"I have seen multi-legged 'humans' that look like half-human/half-octopus. Also reptilian-humans, and furry creatures that have hands like humans and cries like a baby, it mimics human words... also huge mixture of lizard-humans in cages. There are fish, seals, birds and mice that can barely be considered those species. There are several cages (and vats) of winged-humanoids, grotesque bat-like creatures...but 3 1/2 to 7 feet tall. Gargoyle-like beings and Draco-Reptoids."*

*"Level 7 is worse, row after row of thousands of humans and human mixtures in cold storage. Here too are embryo storage vats of humanoids in various stages of*



*development. I frequently encountered humans in cages, usually dazed or drugged, but sometimes they cried and begged for help. We were told they were hopelessly insane, and involved in high risk drug tests to cure insanity. We were told to never try to speak to them at all. At the beginning we believed that story. Finally in 1978 a small group of workers discovered the truth. It began the Dulce Wars".*

When the truth was evident that humans were being produced from abducted females, impregnated against their will, a secret resistance group formed. This did little though. Over time they were assassinated or "died under mysterious circumstances".



**The witness also supplied the following information:**

An underground Military Base/Laboratory in Dulce, New Mexico connects with the underground network of tunnels which honeycombs our planet, and the lower levels of this base are allegedly under the control of Inner Earth beings or Aliens. This base is connected to Los Alamos research facilities via an underground "tube-shuttle." (It can be assumed that such a shuttle way would be a straight-line construction. It should then be possible, by using maps and some deduction, to determine the most likely location of this base, especially since the general location is already known.) Beginning in 1947, a road was built near the Dulce Base, under the cover of a lumber company. No lumber was ever hauled, and the road was later

destroyed. Navajo Dam is the Dulce Base's main source of power, though a second source is in El Vado (which is also another entrance). Most of the lakes near Dulce were made via government grants "for" the Indians.

### Dulce Base - The Central Hub

-1st Level - contains the garage for Street Maintenance.

-2nd Level- contains the garage for trains, shuttles, tunnel-boring machines and UFO maintenance.

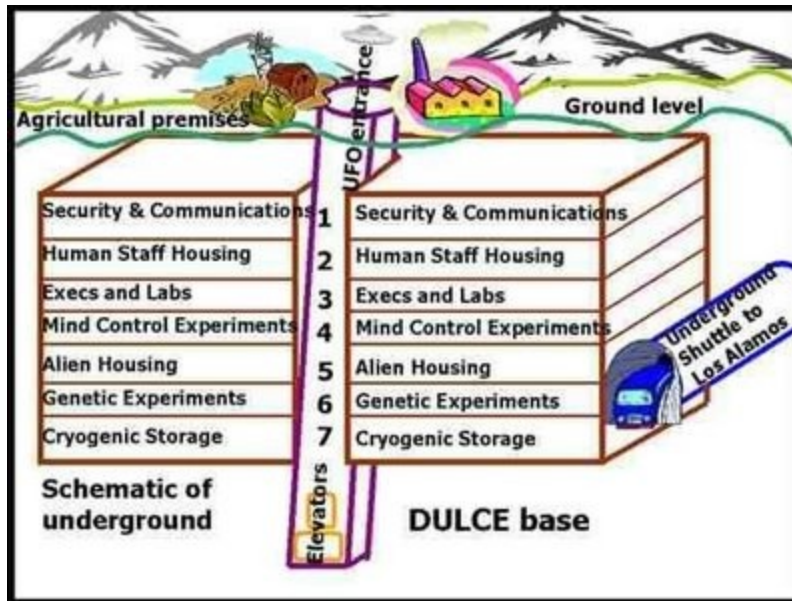
-3rd Level - the first 3 levels contain government offices.

-4th Level - Human Aura Research as well as aspects of Dream Manipulation, Hypnosis, and Telepathy. They can lower your heartbeat with Delta Waves and introduce data and programmed reactions into your mind (for those implanted with brain chips). Most people already are, they just don't know it.

-5th Level - witnesses have described huge vats with amber liquid with parts of human bodies being stirred inside. Rows and rows of cages holding men, women and children to be used as food. Perhaps thousands.

-6th Level - privately called "Nightmare Hall." It contains the genetic labs. Here are where the crossbreeding experiments of human/animal are done on fish, seals, birds, and mice that are vastly altered from their original forms. There are multi-armed and multi-legged humans and several cages and vats of humanoid bat-like creatures up to 7 feet tall.

-7th Level - Row after row of 1,000s of humans in cold storage including children.



-----

It is alleged that Los Alamos and the mountainous regions east and southeast of it in and around the Santa Fe National Forest are the major holding area of earth based extraterrestrial (interterrestrial) beings in North America, although there are a number of smaller habitation locations scattered throughout the underground networks between Dulce and Area 51. 'Dulce Base' is said to hold the second largest repository of extraterrestrials and equipment in North America. None of this information takes into account what resources other nations and governments possess. All the evidence I have received is anecdotal but, in my opinion, the sources are reliable. You can find more at Dulce Conference Ends / The Dulce Report, What Really Happened in the 1979 Dulce Firefight? and Blue Planet Project

- The Dulce Base.

-----



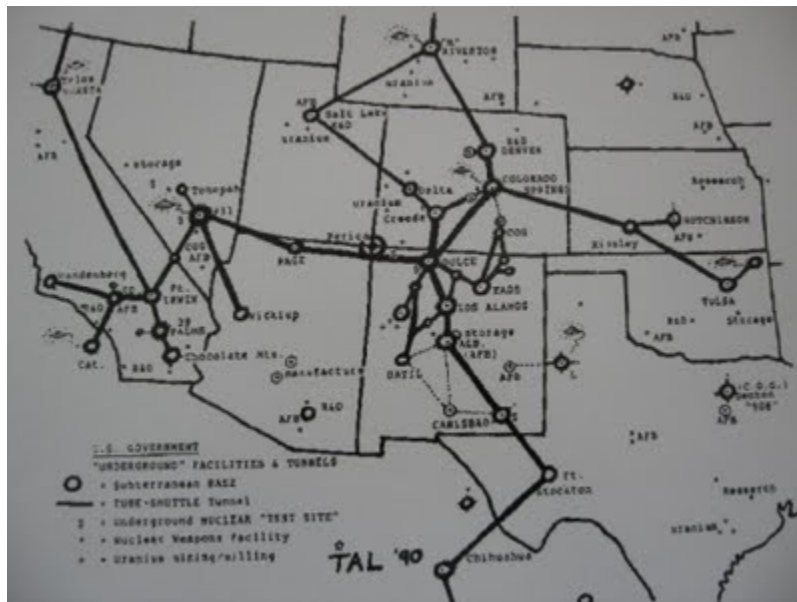
**Archuleta Mesa**

**In May 2010, through the MUFON CMS, a Jicarilla Apache tribal police officer recalled an alien encounter he had in Dulce, New Mexico (unedited):**

*Mid 80's Dulce, NM my self a law enforcement officer w/Jicarilla Apache Police. Background Police Science/Forensic Western NM Univ., Silver City. Had gone to graveyard shift at midnight w/ another officer and dispatcher. Immediately went to a single females home with the other shift and was informed that a small being was in her house at the foot of the bed with a box shining a laser like red light at her, the other officers knowing it was there shift change left without further investigation. Making fun mind you. She was obviously shaken up and I did notice some electrical malfunctions within her home and her animals, dogs and horses were uneasy. Throughout the night I continued to check on her, once in the early morning I was called to her home, her house was dark and as I entered I could hear her down the hall crying for help. I was informed again of visitors with a light in her home and it seemed strangely quiet. No one to be found in the home or area. In the early morning when the sun comes up when their is light I drove up to the home to make a check I noticed some movement in the brush and trees just west of her home about 15 yards away. I still don't understand what I may have saw, but soon after as I was stepping out of my unit three oval craft in a triangular*

pattern about the size of a three bedroom home lifted off from behind some juniper trees just 30 yards at the most taking off silently without noise/down drafts, then turn a bright white light and slow went in the direction east towards Chama, NM slowly gain altitude. My other Officer and Dispatcher was witness to this also. Shortly after I heard on the State Police Frequency from Chama about those UFO.s that were being called in to them. I felt completely helpless as a Officer to help someone who asked for help and was unable to assist and protect her in her time of need. It still bothers me today. S/GJ. (I spoke with Norio in Dulce, NM during the Dulce Base Conference also.)

-----



**A map of the alleged underground connections emanating from Dulce Base**

**The original sources to activity at the Dulce underground Military Base/Laboratory are as follows:**

**Thomas Edwin Castello**

Thomas Edwin Castello claimed to be a former security technician, employed by the Rand Corporation, at the Dulce underground facility. However, Castello has only



provided stories, nothing solid, and has yet to come forward in person. There is some doubt as to whether he actually exists. He allegedly stole a set of controversial papers called the "Dulce Papers," along with over 30 black and white photos and a video tape.

Castello reported that the Dows [Greys], the Dracos [Reptiloids], and the Ciakars are working there hand in hand with over 18,000 short "greys" living the Dulce Facility. A colleague had come face-to-face with a 6-foot tall Reptoid which had materialized in his house. The Reptoid showed an interest in research maps of New Mexico and Colorado which were on the wall. The maps were full of colored push-pins and markers to indicate sites of animal mutilations, caverns, locations of high UFO activity, repeated flight paths, abduction sites, ancient ruins, and suspected alien underground bases.

The multi-level facility at Dulce is reported to have a central HUB which is controlled by base security. The security level goes up as one descends to lower levels. Thomas had an ULTRA-7 clearance. He knew of seven sub-levels, but there may have been more. Most of the aliens supposedly are on levels 5, 6 and 7 with alien housing on level 5. The only sign in English was over the tube shuttle station hallway which read "to Los Alamos."

There appears to be a vast network of tube shuttle connections under the U.S. which extends into a global system of tunnels and sub-cities. Connections go from Dulce to the Page, Arizona facility, then onto an underground base below Area 51 in Nevada. Tube shuttles go to and from Dulce to facilities below Taos, N.M.; Datil, N.M.; Colorado Springs, Colorado; Creed, Colorado; Sandia' then on to Carlsbad, New Mexico.

At the Dulce Base, most signs on doors and hallways are in the alien symbol language and a universal symbol system understood by humans and aliens. Thomas stated that after the second level, everyone is weighed in the nude, then given a uniform. Visitors are given off-white uniforms; jump suits with a zipper. The weight of the person is put on a computer I.D. card each day. Any change in weight

is noted; if over three pounds, a physical exam and X-ray is required.

Scales are located in front of all sensitive areas and are built into the floor near doorways and the door control panels. An individual places his computer I.D. card into the door slot, then enters a numerical code onto a keypad. The person's weight and code must match the card or the door will not open. Any discrepancy will summon security. No one is allowed to carry anything into sensitive areas. All supplies are put on a conveyor belt and X-rayed. The same method is used in leaving sensitive areas.

All elevators are controlled magnetically; there are no elevator cables. The magnetic system is inside the walls of the elevator shaft, there are no normal electrical controls. Everything is controlled by advanced magnetics, including lighting. There are no regular light bulbs and the tunnels are illuminated by phosphorous units with broad structureless emission bands. Some deep tunnels use a form of phosphorous pentoxide to temporarily illuminate areas. The aliens won't go near these areas for reasons unknown.

Level 1 contains the garage for street maintenance. Level 2 contains the garage for trains, shuttles, tunnel-boring machines and disc maintenance. The studies on Level 4 include human-aura research, as well as all aspects of telepathy, hypnosis, and dreams. Thomas says that they know how to separate the bioplasmic body from the physical body to place an "alien entity" life-force-matrix within a human body after removing the "soul" lifeforce-matrix of the human.

Level 6 is privately called "Nightmare Hall." It holds the genetic labs, where experiments are done on fish, seals, birds, and mice that are vastly altered from their original form. There are multi-armed and multi-legged humans and several cages (and vats) of humanoid bat-like creatures as tall as 7-feet. The aliens have taught the humans a lot about genetics; things both useful and dangerous.

At Level 7, Thomas encountered humans in cages. Row after row of thousands of humans, human-mixture remains, and embryos of humanoids were kept in cold

storage. He says, "I frequently encountered humans in cages, usually dazed or drugged, but sometimes they cried and begged for help. We were told they were hopelessly insane, and involved in high-risk drug tests to cure insanity. We were told to never speak to them at all. At the beginning we believed that story. Finally in 1978 a small group of workers discovered the truth. That began the Dulce wars."

The Grey and reptoid species are highly analytical and technologically oriented. They have had ancient conflicts with the Nordic humans from other space societies, and may be staging here for a future conflict. Intensely into computing and bio-engineering sciences, they are led to doing reckless experiments without regard for what we consider to be ethical and empathetic conduct toward other living creatures.

Principal government organizations involved in mapping human genetics, the so-called genome projects, are within the Department of Energy (which has a heavy presence on the Nevada Test Site); the National Institute of Health; the National Science Foundation; the Howard Hughes Medical Institute; and, of course, the Dulce Underground Labs which are run by the DOE. Thomas had revealed that the chief of the genetic experiments for Los Alamos and Dulce is Larry Deaven.

According to Thomas, the alien androgynal breeder is capable of parthenogenesis. At Dulce, the common form of reproduction is by polyembryony. Each embryo can, and does divide into 6 to 9 individual "cunne" (pronounced cooney, i.e. siblings). The needed nutriment for the developing cunne is supplied by the "formula," which usually consist of plasma, deoxyhemoglobin, albumin, lysozyme, cation, amniotic fluid and more. The term "genome" is used to describe the totality of the chromosomes unique to a particular organism (or any cell within an organism), as distinct from the genotype, which is the information contained within those chromosomes. The human genes are mapped to specific chromosomal locations. This is an ambitious project that will take years and a lot of computer power to accomplish.

Thomas also says the aliens don't want the land, the gold, the minerals, or water that we possess, nor even the human or animal life. What they do want is magnetic power that surges on and through the Earth. The aliens harvest this magic power in a way unknown to us. Thomas says the aliens recognize this power as more valuable than any other commodity on our globe.

### **Paul Bennewitz**

Paul Bennewitz, a physicist in Albuquerque and a UFO researcher affiliated with APRO (Aerial Phenomena Research Organization), traveled to Dulce in 1977 to investigate reports of cattle being mutilated on the ranch of Edmound Gomez. He became friends with the local law enforcement official in the area of the Jicarilla Indian Reservation, Gabe Valdez, and the two investigated the mutilations and also some mysterious lights reportedly seen over Archuleta Mesa. Two gentlemen named Howard Burgess and John F. Gille (Jean Francois Gille), also seem to have been involved in these investigations.

Bennewitz along with Dr. Leo Sprinkle then studied the case of Myrna Hansen who said under hypnosis that she had been abducted by the aliens and taken to a secret underground base where they saw the cattle being mutilated and drained of their blood and vats containing human body parts. Implants were placed in the bodies of her and her son and that the aliens could control their minds through these devices.

Bennewitz began filming the strange lights he was seeing over Manzano. He also built a complex electronic surveillance equipment network to receive low-frequency electromagnetic transmissions that he believed came from the alien craft. Bennewitz had several contacts with Air Force Officials that he tried to warn about the threat represented by aliens against the Manzano Weapons Storage Area.

The year after, Bennewitz wrote a computer program that he claimed could translate the alien radio transmissions. He now came to believe that he was intercepting the messages that the aliens were transmitting to mind-control devices such as those that Myrna Hansen claimed had been placed in her and her son.

During this period, 1980 to 1987, Bennewitz was visited by many other UFO researchers, including John Lear and Linda Moulton Howe. In 1987, another abductee named Christa Tilton, added to the tales of underground bases and aliens and vats with human body parts in them.

Bennewitz told Thomas Moore, the famous ufologist, that the alien transmissions he had received indicated that the grays, who he said were responsible for cattle mutilations and the abductions of humans, were building a secret underground base beneath Archuleta Peak on the Jicarillo Indian Reservation near Dulce, New Mexico with the help of the US Government.

When he said in a final burst of paranoia that aliens were coming through the wall of his house to inject him chemicals, it was time to send him to the Hospital. The story says that he has recovered but refuse to deal with the subject of UFOs.

### **Phil Schneider**

Phil Schneider was an engineer who claimed to have discovered the alien base accidentally. Schneider is said to have committed suicide, but others claim he was found with either (1) piano wire, or (2) rubber catheter hose, wrapped around his throat, which indicate that he was murdered, ostensibly to silence him. Some sources say, however, that Schneider both had severe brain damage and was also a paranoid schizophrenic, which makes his stories about Dulce somewhat questionable.

"Back in 1954, under the Eisenhower administration, the federal government decided to circumvent the Constitution of the United States and form a treaty with alien entities. It was called the 1954 Greed Treaty, which basically made the agreement that the aliens involved could take a few cows and test their implanting techniques on a few human beings, but that they had to give details about the people involved. Slowly, the aliens altered the bargain until they decided they wouldn't abide by it at all. Back in 1979, this was the reality, and the fire-fight at



Dulce occurred quite by accident.

I was involved in building an addition to the deep underground military base at Dulce, which is probably the deepest base. It goes down seven levels and over 2.5 miles deep. At that particular time, we had drilled four distinct holes in the desert, and we were going to link them together and blow out large sections at a time. My job was to go down the holes and check the rock samples, and recommend the explosive to deal with the particular rock. As I was headed down there, we found ourselves amidst a large cavern that was full of outer-space aliens, otherwise known as large Greys. I shot two of them. At that time, there were 30 people down there. About 40 more came down after this started, and all of them got killed. We had surprised a whole underground base of existing aliens. Later, we found out that they had been living on our planet for a long time, perhaps a million years. This could explain a lot of what is behind the theory of ancient astronauts."

**NOTE: there are other links from past posts that may be of interest - UFO Witnesses - Sandia Mountains, New Mexico and The Reptilian Files. So, I ask again...is it possible that these attacks on the Dine Navajo lands are of unknown experimental beings that have either escaped from the facility or have been released in order to be scientifically monitored? Lon**

*Sources:*

*PhantomsandMonsters.com*

*aliens.monstrous.com*

*theonlinemail.co.uk*

*ufos-aliens.co.uk*

*theregister.co.uk*

*orgoneblasters.com*

*bibliotecapleyades.net*

*burlingtonnews.net*

*'Alien Base: The Evidence For Extraterrestrial Colonization Of Earth' - Good,*

*Timothy*

*subversiveelement.com*

*exopolitics.org*

*ufomind.com*

*illuminati-news.com*

*www.ufodigest.com*

*thewatcherfiles.com*

*greadatreaty.com*

Labels: alien abduction, alien technology, conspiracy, DNA, Dulce Base, human experiments, humanoid, hybrids, military, UFO, underground bases



**Have you had a close encounter or witnessed something unusual? Send us an email**

**Please help support  
'Phantoms and Monsters'  
Thanks!**





- \_\_\_\_\_
- \_\_\_\_\_

You might also like:

[The Actuality of Alien / Human Hybrids](#)

[1989: Fall of the Iron Curtain / Return of the Humanoids - ...](#)

[1947: The Year of the Crash - Part 1](#)

LinkWithin

POSTED BY LON STRICKLER AT 3:23 PM  

- \_\_\_\_\_
- \_\_\_\_\_
- \_\_\_\_\_
- \_\_\_\_\_
- \_\_\_\_\_

2 COMMENTS:

 PowerPC said...

After reading the correspondence concerning the technician at the Dulce Base one thing struck me that did not seem to make sense. While collecting tapes in an area he would not normally be allowed in he heard a voice over the loud speaker...Cell 34 Compromised, Entity has breached containment.

Why would it be necessary to point out the "Entity" had breached

containment. All that had to be said was containment breached and everyone that was in the know would have known exactly what was going on. Using the word Entity is a good way to have all kinds of security leaks and misunderstandings. Not very well thought out by a super secret organization. Some of the creatures described are unbelievable and I find it hard to believe that humans would be involved with genetic experiments with human like creatures with multiple legs etc. If they were involved they were not humans but animals themselves.

8:26 PM

 VenatorX said...

Lon

Has anyone truly interested in this "Dulce Base" aspect of UFO subculture ever attempted to do a satellite subterranean scan to determine if there is anything unnatural below? The entirety of the UFO phenomenon has been murkily deranged by the penetration of non substantiated BS coming from those merely looking to make money as authors. I'm tired of it. Can you or ANYONE else provide one single REAL shred of substantiated evidence that Dulce exists? Or are we left to the usual process of attempting to discern which entertainment to entertain "today" and so on? If the truth in any way REALLY does matter in this case, I would simply suggest one such satellite based scan prior to freaking everyone out about "bigfoot like hominids" running around attacking cattle with surgical precision. It sure would be a "switch" to see the "paranormal authors" who call themselves "researchers" get just a tad more responsible with respect to basic objectivity and the, eh hem, TRUTH.

Thanks,  
Jeff

9:49 AM

<http://naturalplane.blogspot.com/2011/08/dulce-base-what-are-we-seeing.html>

